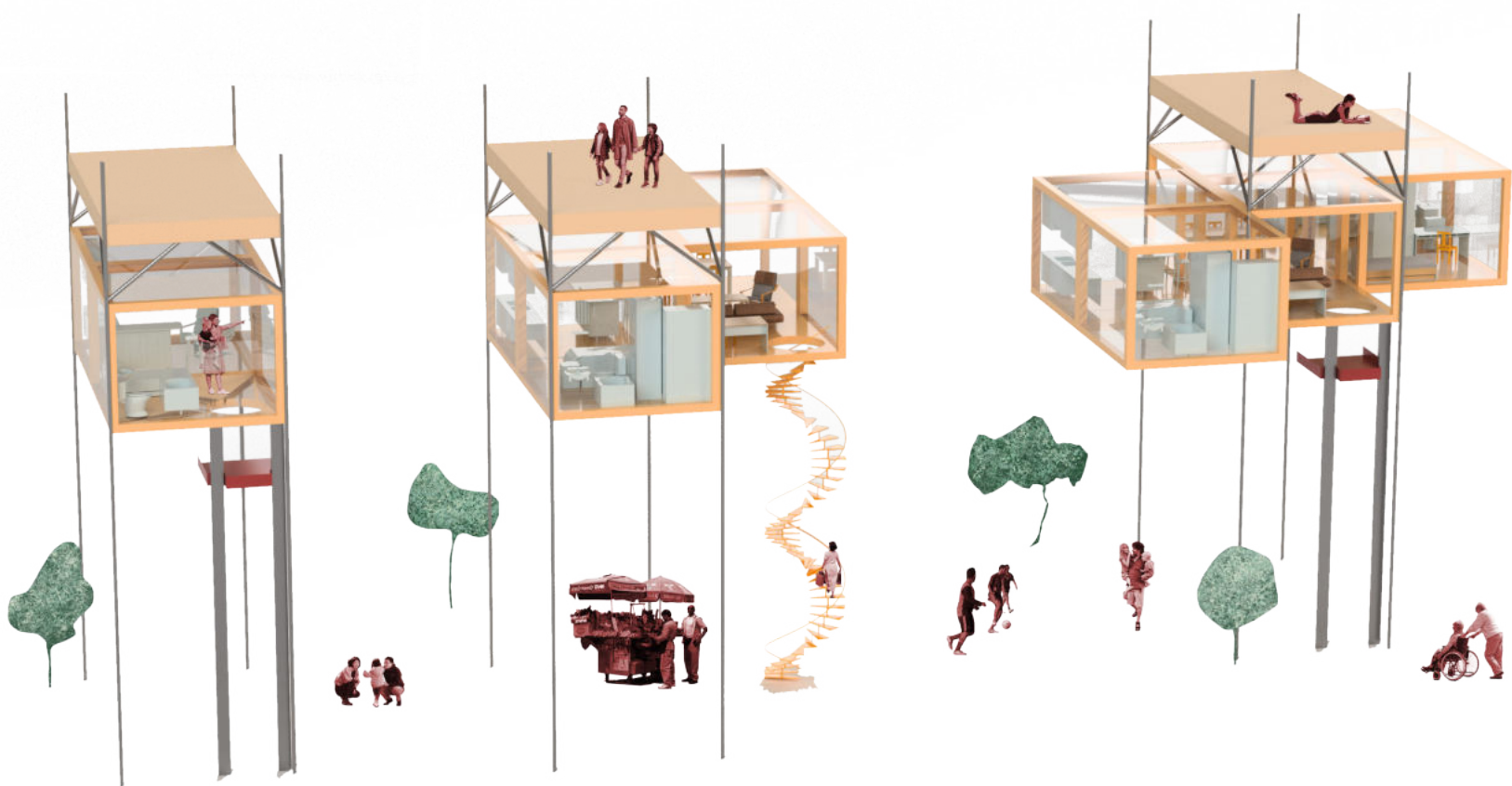


DROPS

Every stream begins with drops that come together and create something greater than the sum of themselves. What are the drops that we want to contribute to Irpin? Drops so powerful that they have the potential to become anything without being already "something".



"Stream" is a process and especially in times of war cities must be adaptable, decentralized and fluid. Inspired by scaffolding on construction sites, its ability to support the incomplete and its flexibility, the process is the result. Instead of seeing construction as a necessary duty for the result, the "becoming" is celebrated and the construction democratized.



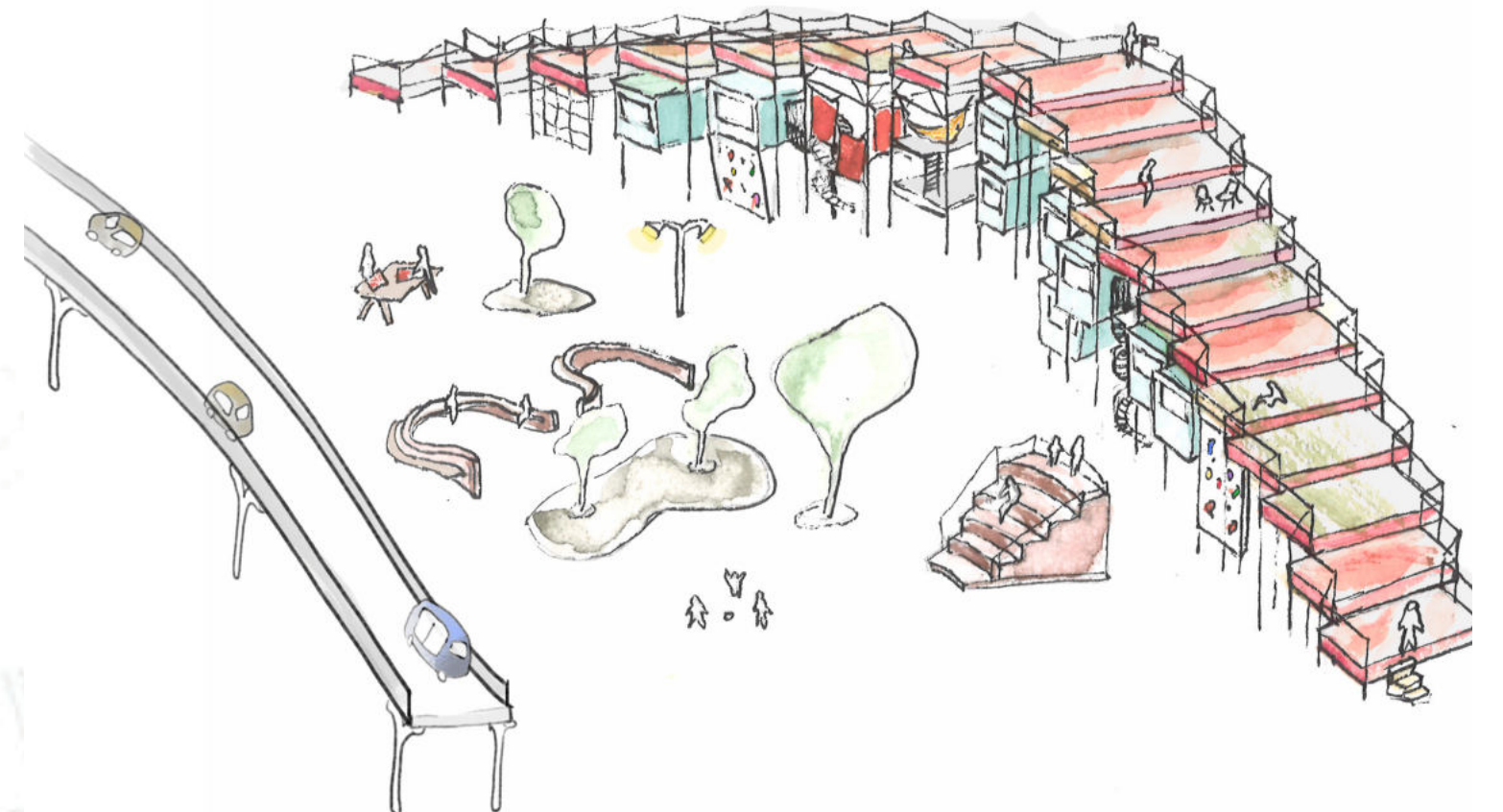
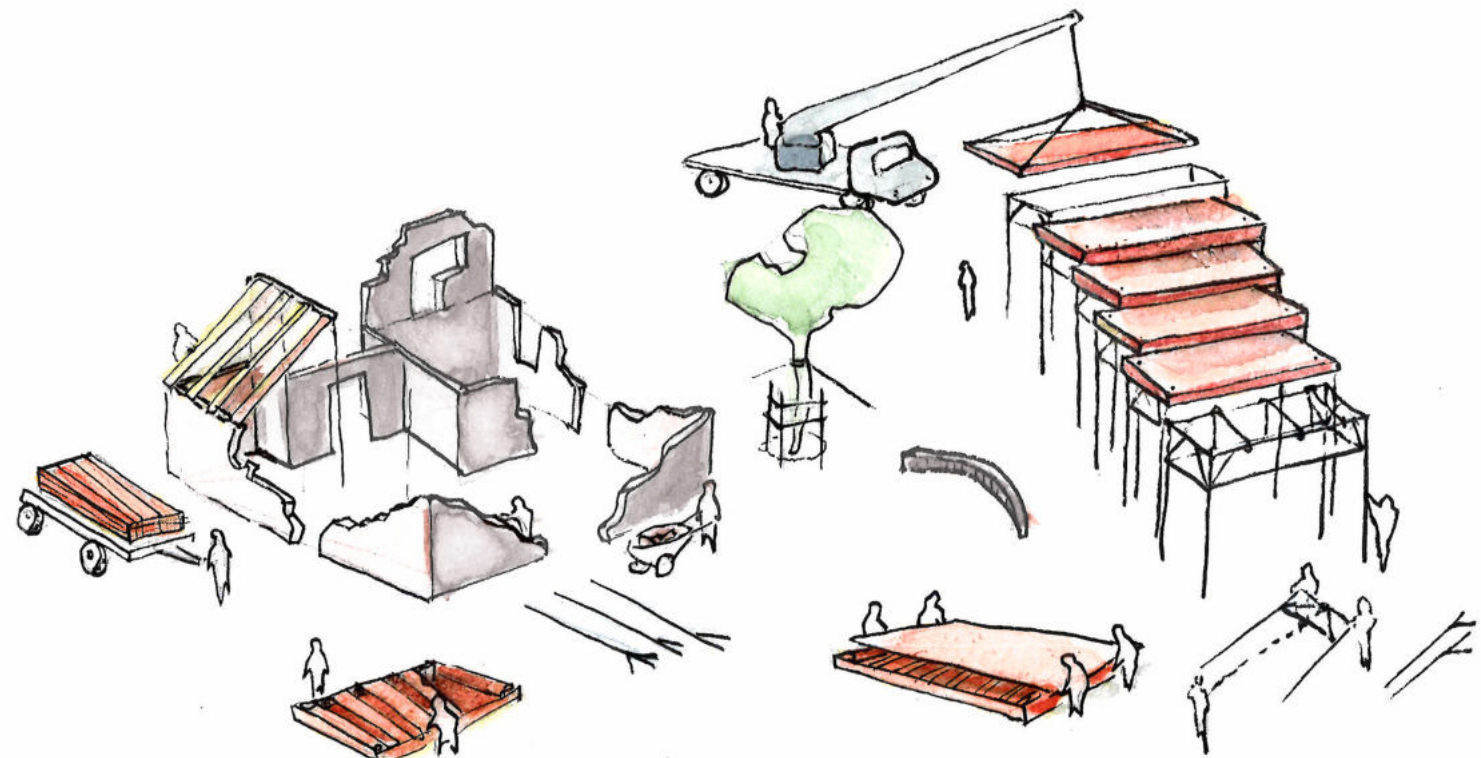
With 5.1 million IDP (internally displaced people) in Ukraine the various cities are subject to enormous fluctuations in capacity. Those people do not know if they will ever return to their hometowns and are in need for temporary shelter that might become a longterm solution. Giving those people a space in the stream is actively incorporating them as a part of the community. The housing modules measure 4x4m and can be installed as a part of the stream or on the ground. They can be combined to different typologies and grow based on the needs of the community and the future population of Irpin. While the main focus is on residential housing, the modules can also be used for institutional or social infrastructure.



The "stream" of people is the starting point of this concept. How to insure a fast and green mobility within Irpin, to adjacent municipalities as well as to Kyiv. Current traffic connection within Irpin cut the city in two, create barriers between people and people and nature. To reduce the threat posed by mobility in Irpin so far several measures are combined. Along the stream the connection is elevated opening up the groundlevel for a continuous public space. Furthermore car traffic is slowed down to 35 km/h making it possible for it to coexist with bikers. Sharing hubs offer bike- and car-sharing and the exchange of goods.

TRICKLE

When enough drops unite they start to trickle. A post-war city is stripped of its structure, all that remains is community and cohesion. When people return back to their destroyed homes, they want to actively contribute to the reconstruction of their city. We want to give this community a tool to rebuild their city together.

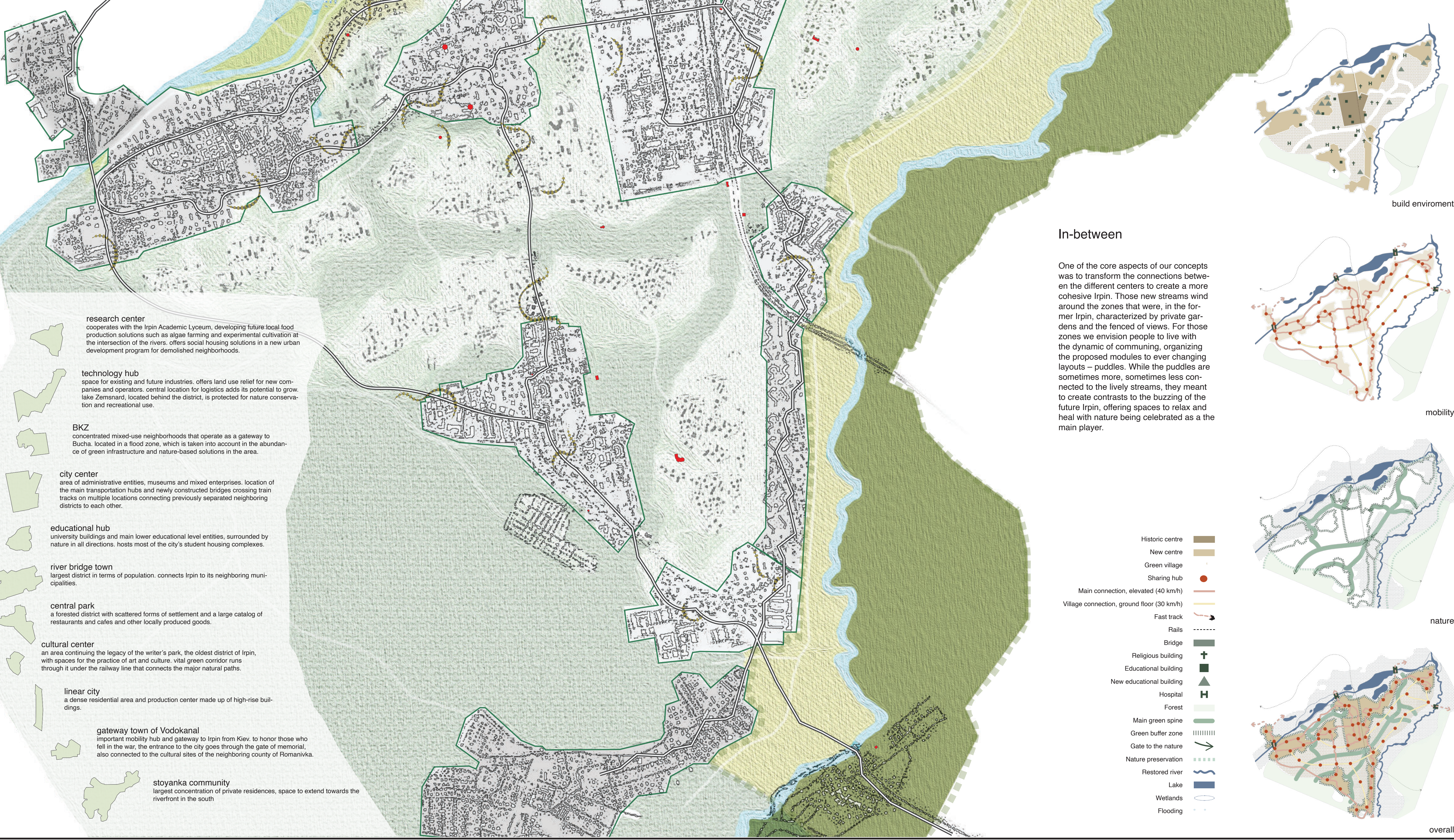


STREAM

Piling up, trickles eventually turn into a stream. The master plan exemplifies a scenario of how the trickles could form streams in Irpin, connecting different centers in between one another and to the nearby municipalities; it shows a static picture of an unpredictable process that enables organic formation within the community's own decision-making power. To achieve resilient status in uncertain times, cities should imitate rivers to flow

without interruptions - dysfunction concludes erosion at one point and floods elsewhere, and the same cause-effect relationship happens in cities too. In order to avoid inconsistencies, we identify emotionally and culturally important aspects and pursue to create a new life between them that flows from their inner synergy, offering versatile and communal solutions for everyone looking for a shelter/place to settle down.

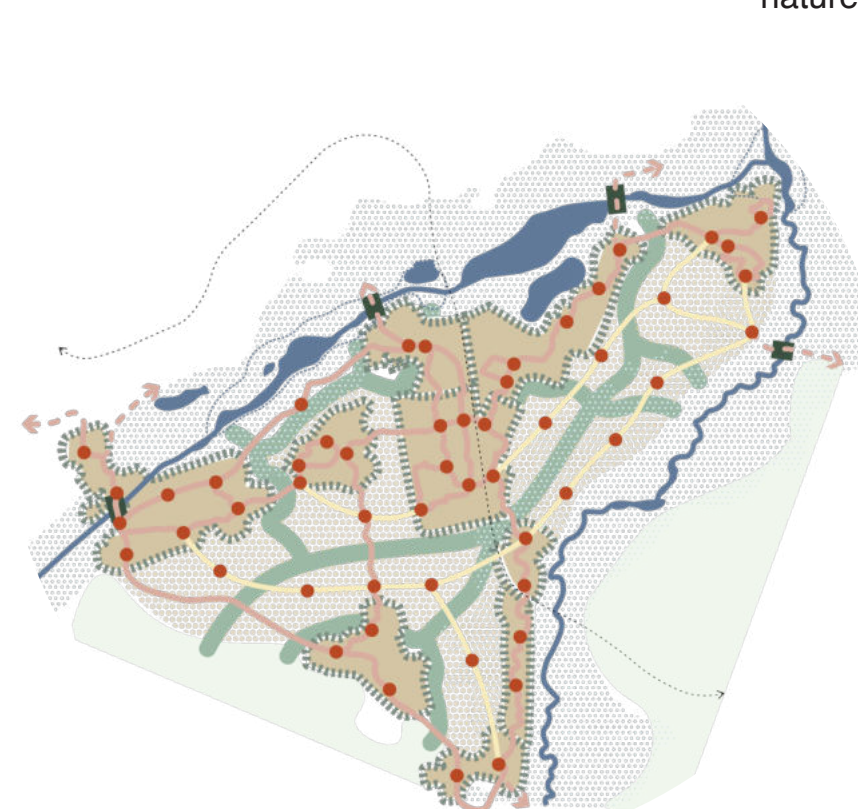
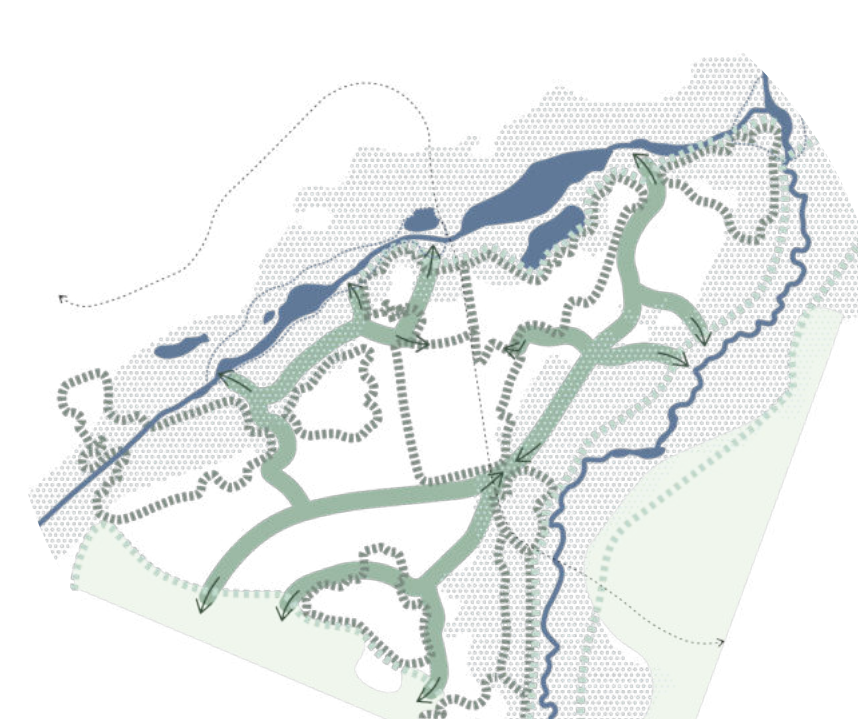
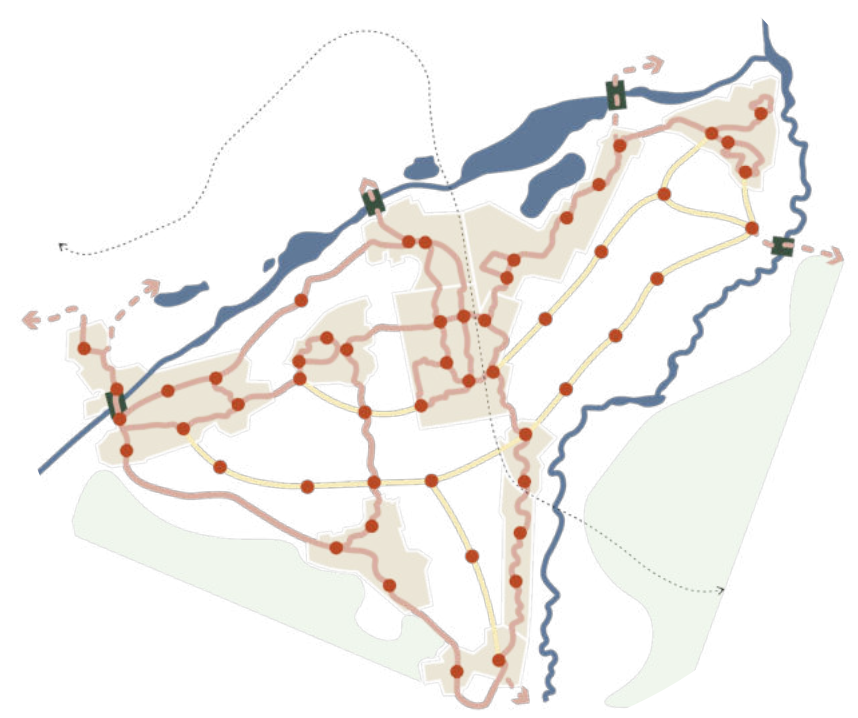
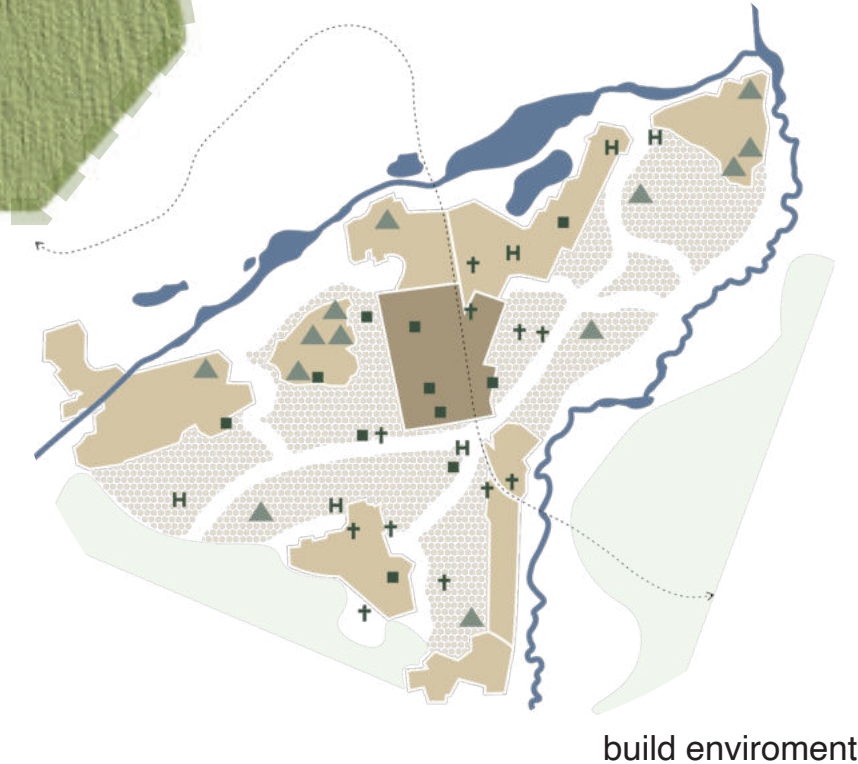
- ecological corridor / restored forest
- buffer zones
- recreational trail
- centers
- villages
- nature conservation
- historical buildings / monuments
- streamlets
- major connections



- research center**
cooperates with the Irpin Academic Lyceum, developing future local food production solutions such as algae farming and experimental cultivation at the intersection of the rivers, offers social housing solutions in a new urban development program for demolished neighborhoods.
- technology hub**
space for existing and future industries, offers land use relief for new companies and operators, central location for logistics adds its potential to grow, lake Zernograd, located behind the district, is protected for nature conservation and recreational use.
- BKZ**
concentrated mixed-use neighborhoods that operate as a gateway to Bucha, located in a flood zone, which is taken into account in the abundance of green infrastructure and nature-based solutions in the area.
- city center**
area of administrative entities, museums and mixed enterprises, location of the main transportation hubs and newly constructed bridges crossing train tracks on multiple locations connecting previously separated neighboring districts to each other.
- educational hub**
university buildings and main lower educational level entities, surrounded by nature in all directions, hosts most of the city's student housing complexes.
- river bridge town**
largest district in terms of population, connects Irpin to its neighboring municipalities.
- central park**
a forested district with scattered forms of settlement and a large catalog of restaurants and cafes and other locally produced goods.
- cultural center**
an area continuing the legacy of the writer's park, the oldest district of Irpin, with spaces for the practice of art and culture, vital green corridor runs through it under the railway line that connects the major natural paths.
- linear city**
a dense residential area and production center made up of high-rise buildings.
- gateway town of Vodokanal**
important mobility hub and gateway to Irpin from Kiev, to honor those who fell in the war, the entrance to the city goes through the gate of memorial, also connected to the cultural sites of the neighboring county of Romanivka.
- stoyanka community**
largest concentration of private residences, space to extend towards the riverfront in the south

In-between

One of the core aspects of our concepts was to transform the connections between the different centers to create a more cohesive Irpin. Those new streams wind around the zones that were, in the former Irpin, characterized by private gardens and the fenced off views. For those zones we envision people to live with the dynamic of communing, organizing the proposed modules to ever changing layouts – puddles. While the puddles are sometimes more, sometimes less connected to the lively streams, they meant to create contrasts to the buzzing of the future Irpin, offering spaces to relax and heal with nature being celebrated as a the main player.



- Historic centre
- New centre
- Green village
- Sharing hub
- Main connection, elevated (40 km/h)
- Village connection, ground floor (30 km/h)
- Fast track
- Rails
- Bridge
- Religious building
- Educational building
- New educational building
- Hospital
- Forest
- Main green spine
- Green buffer zone
- Gate to the nature
- Nature preservation
- Restored river
- Lake
- Wetlands
- Flooding