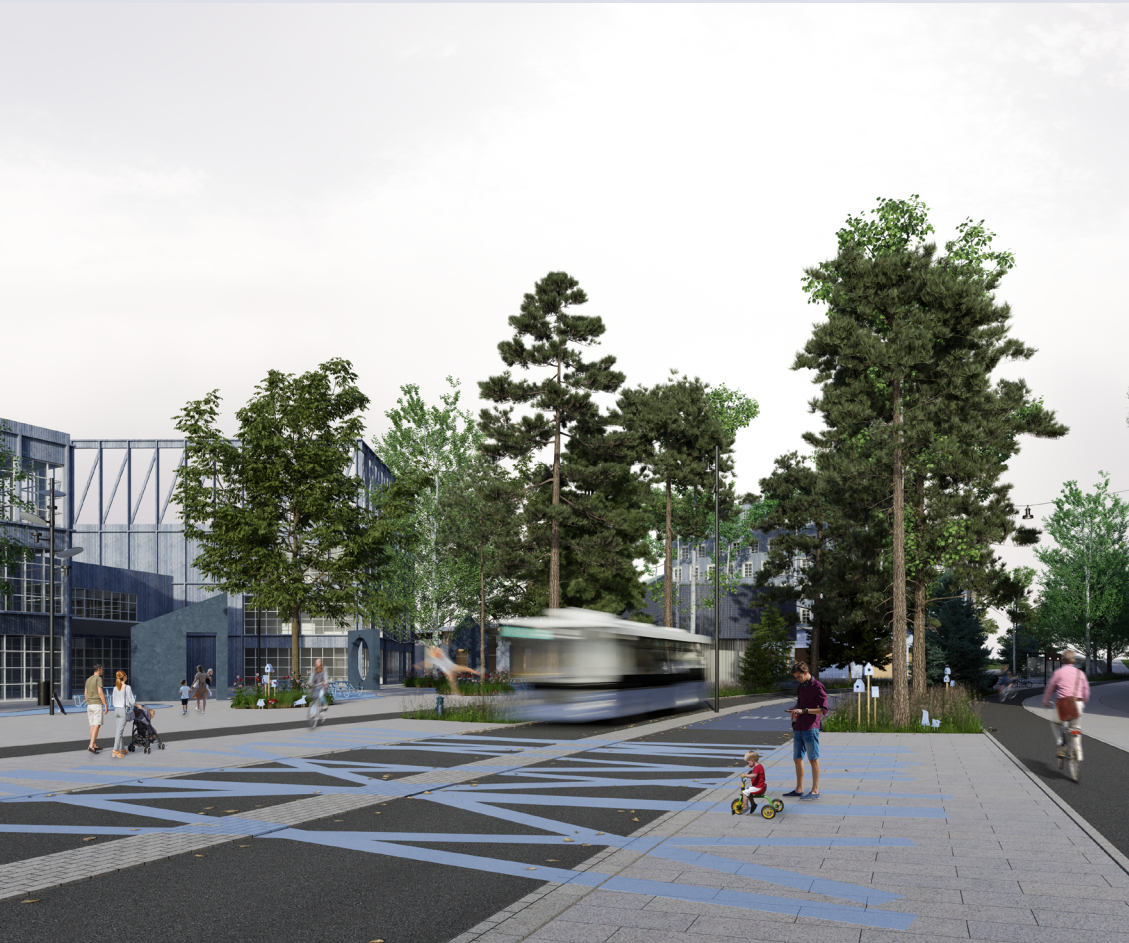


Well, finally it's blue!

Michael Hovorka, Czechia



“The final missing piece in creating vibrant city district by connecting existing structures.”

As more than 65% of the Icelandic population already lives in the Reykjavik region, and the number continues to grow, coupled with accelerating climate changes, the city faces challenges in sustainably managing future growth. Should it prioritize expansion or densification? And what about public transportation? These are all questions that the city administration is currently grappling with, and Keldur is meant to be one of the potential solutions.

Connection, sustainability and diversity. Those three ideas shaped my project throughout the whole design process since the very beginning. Main goal was to create a new neighborhood, that will connect existing neighborhoods surrounding it and thus become a new urban center for the whole district.

The spine of the whole neighborhood is the BRT line, that connects three new stops with the Reykjavik's city centre. Along those stops, new local centers

are created. Each of them with different characteristics, that reflect different design language and typologies in the three new districts. Their design is based on typical city blocks, that are further developed to better fit local needs. Blocks around the edges slowly disappear into the greenery. By contrast, block structure near the centers is getting bigger and bigger to use site potential.

Connecting to the other built-up areas was no the only way to connect people. I wanted to create a space, where locals will have the opportunity to meet and “connect” with other inhabitants. This is supported by the concept of clusters, where larger groups of people always have some outdoor common areas where they can meet and organize leisure events. And last but not least, the development is seamlessly connected to the natural environment surrounding the neighborhood through linear parks and street openings.



VILLAGE CLUSTER



CITY CLUSTER