



ZAN ZS 2022-23/ ATELIÉR BEDNÁŘOVÁ - KOUBEK MICHALIČKOVÁ
ZADÁNÍ - PROSTOR VĚC VEŘEJNÁ - OBJEKTY DO ATRIÍ FA ČVUT
ONDŘEJ VEČEŘA - Z CENTRA ŠKOLY DO PŘÍRODY

Původní návrh



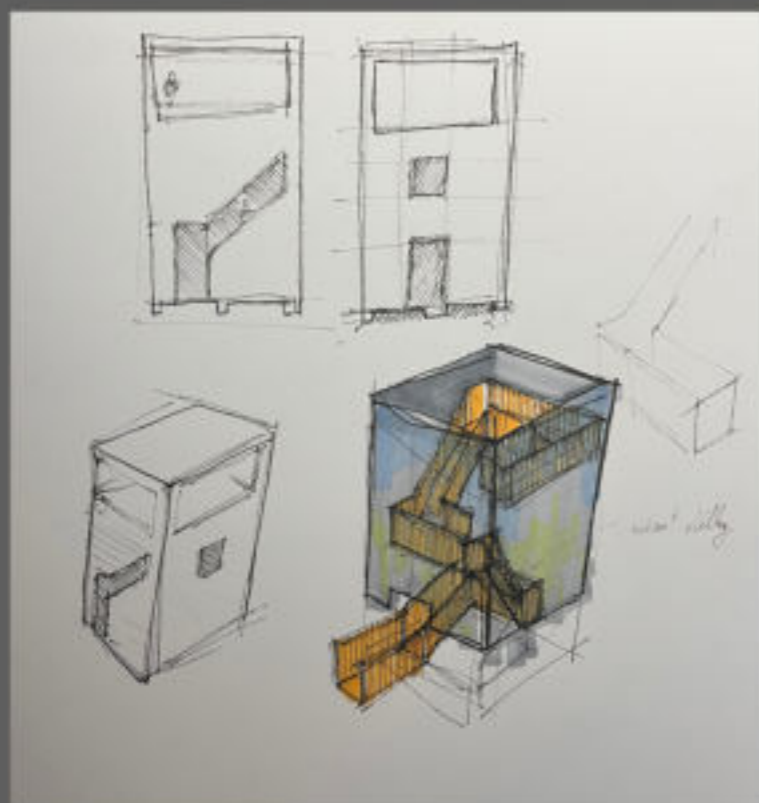
Myšlenka

Navrhnout prostor, ve kterém se budou vystavovat fotografie české přírody. Objekt, ze kterého návštěvník může pozorovat výstavu je inspirován rozhlednami, které jsou neodmyslitelnou součástí české krajiny

Další možné podoby

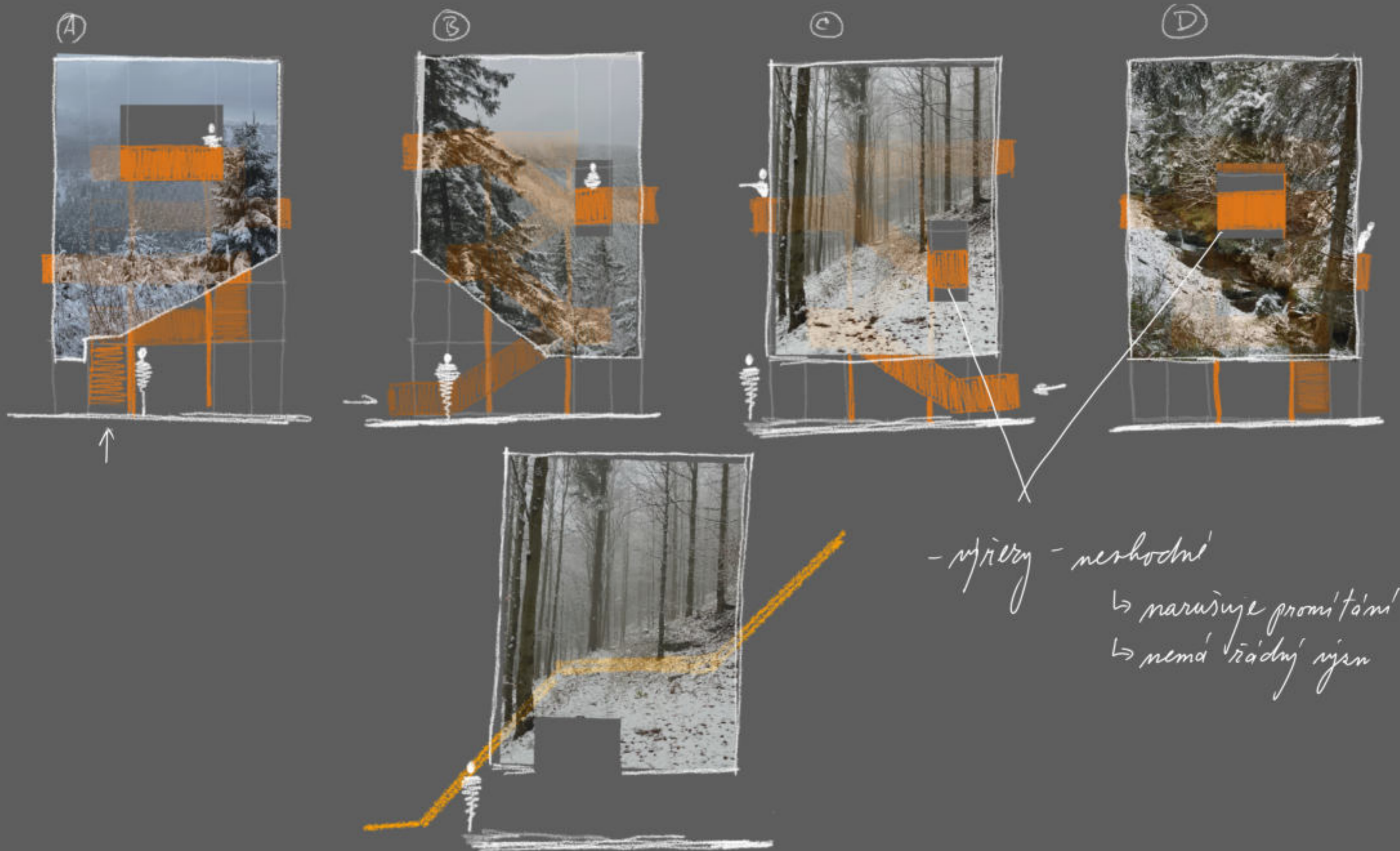
↳ myšlenka inspirace Alenou Šrámovou?

↳ medvědí přilís mysl se spojem s tematem mystiky



— jednotlivé „ostrůvky“ a patrech
narušují čistotu mřížky

Vnější vrstva



Podoba vnější vrstvy

A



B



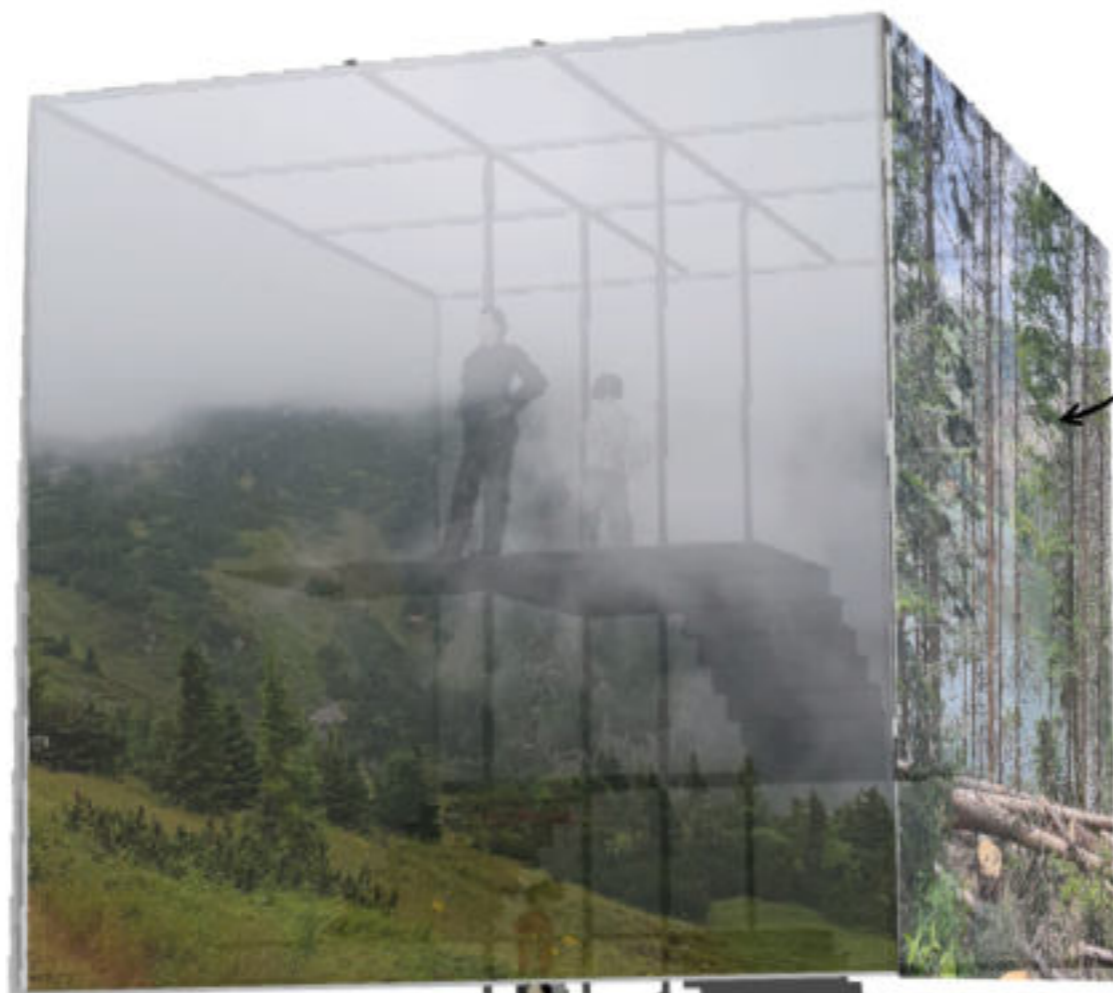
C



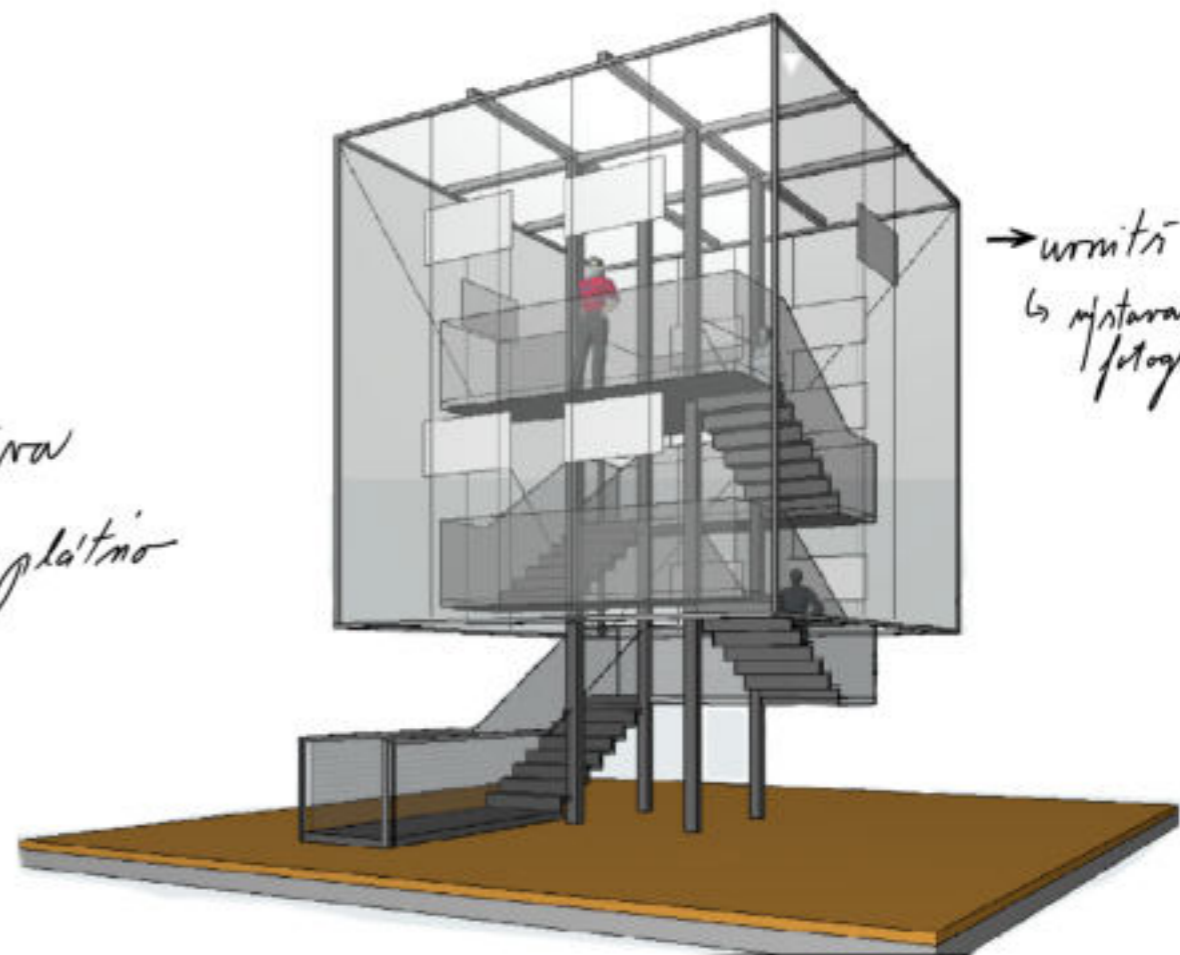
D



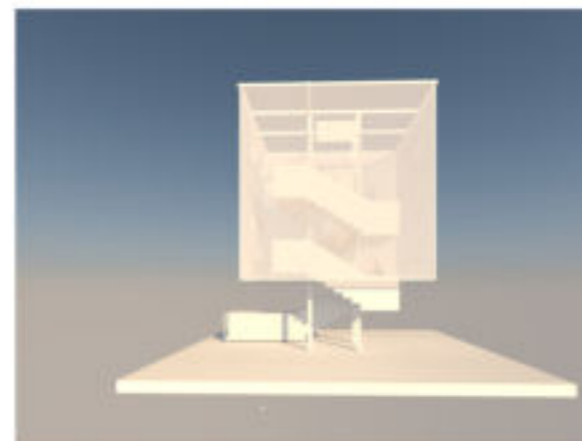
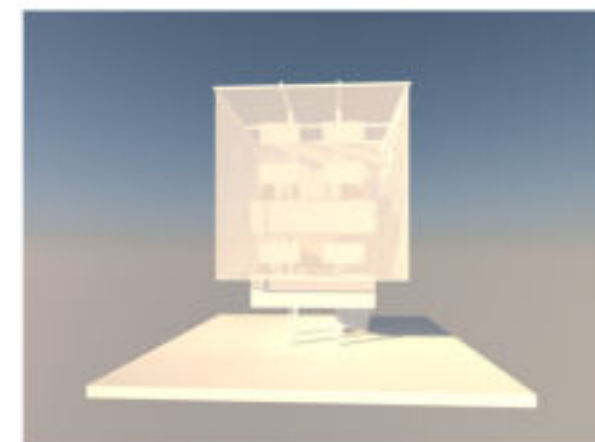
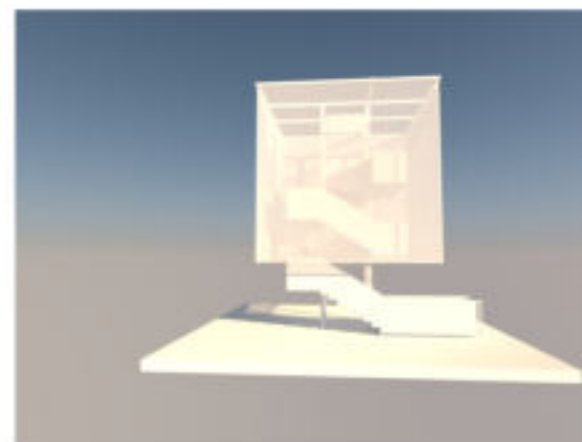
Finální návrh

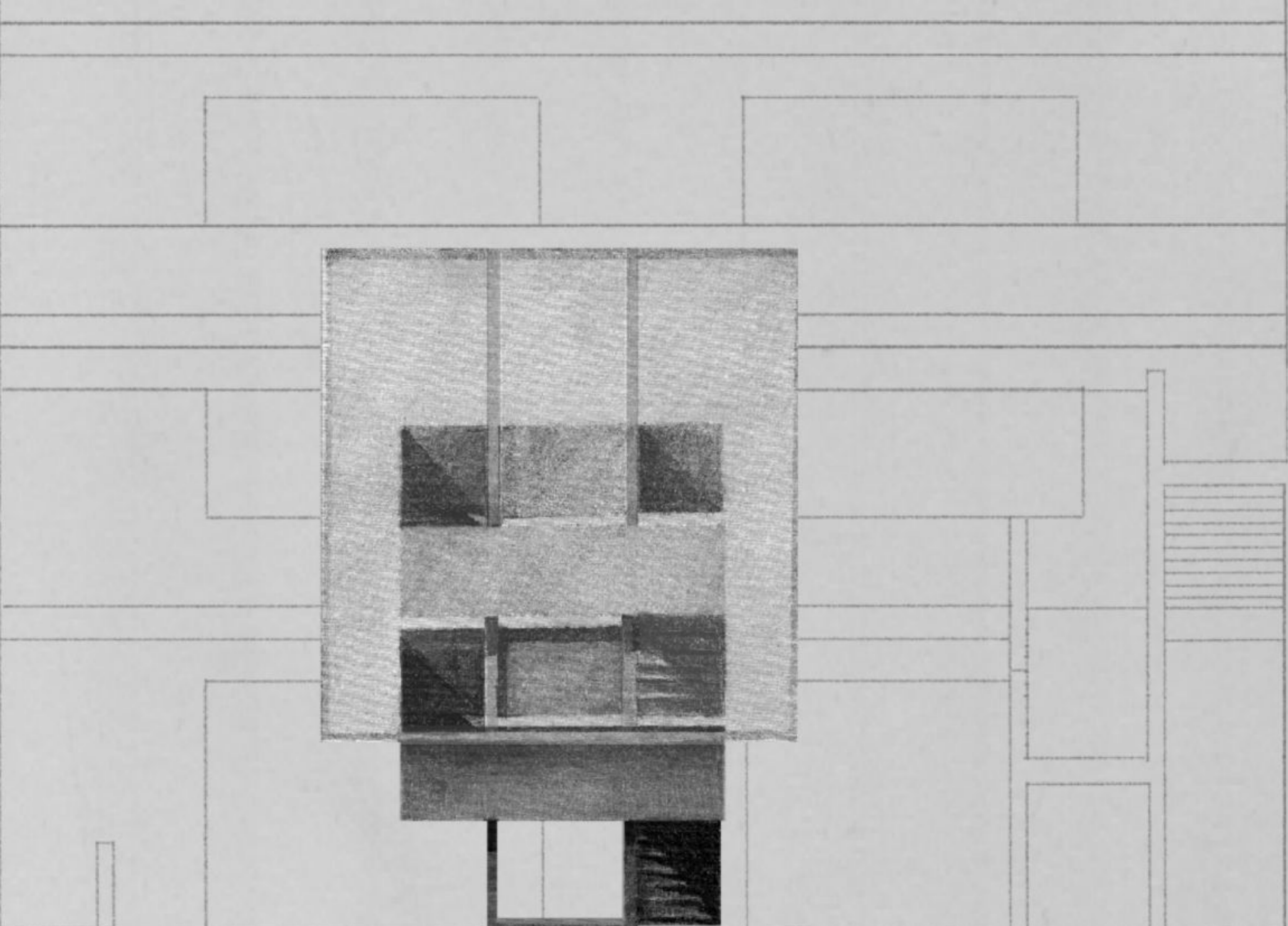


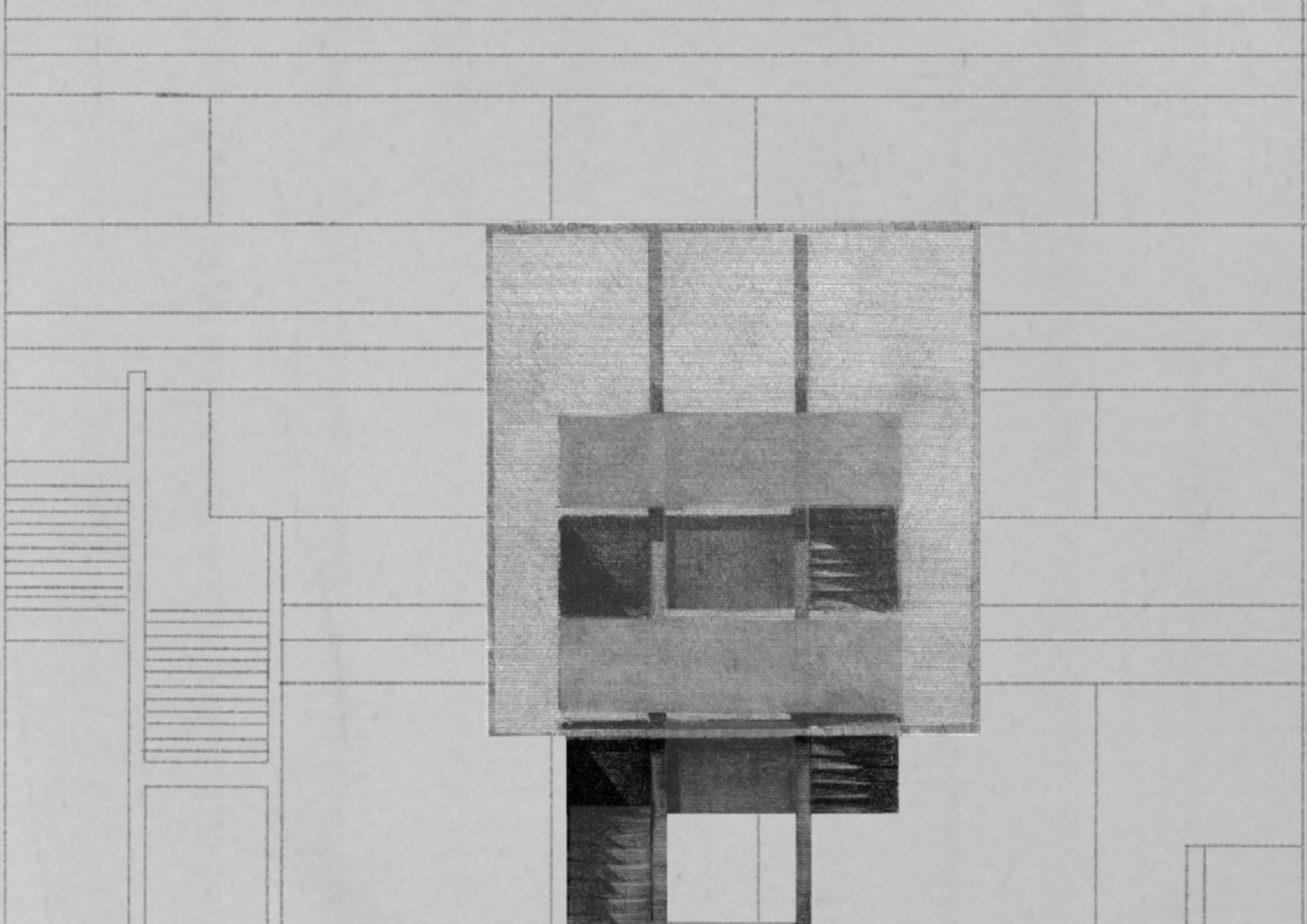
→ vnejší strana
↳ prosmí taci plátno

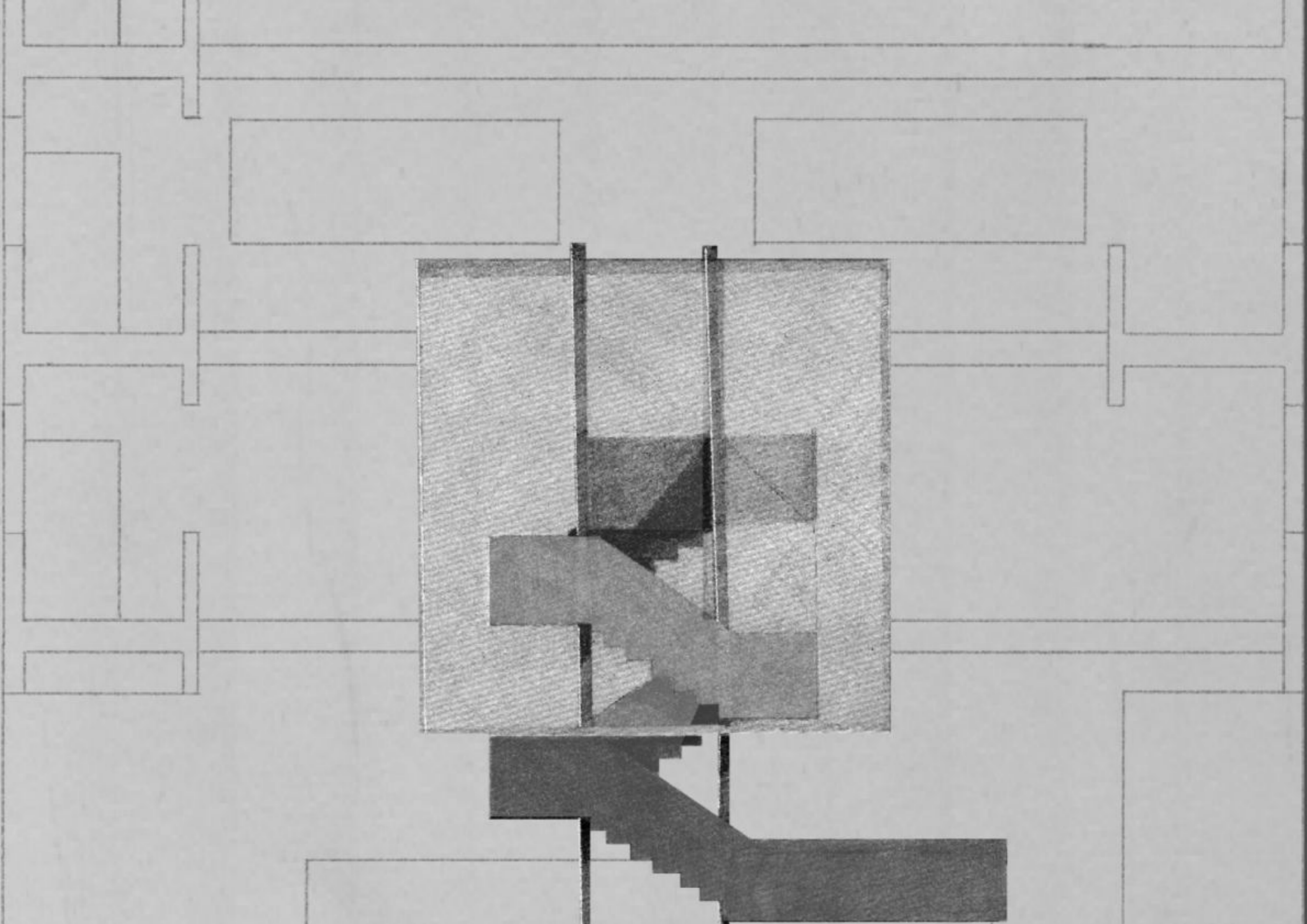


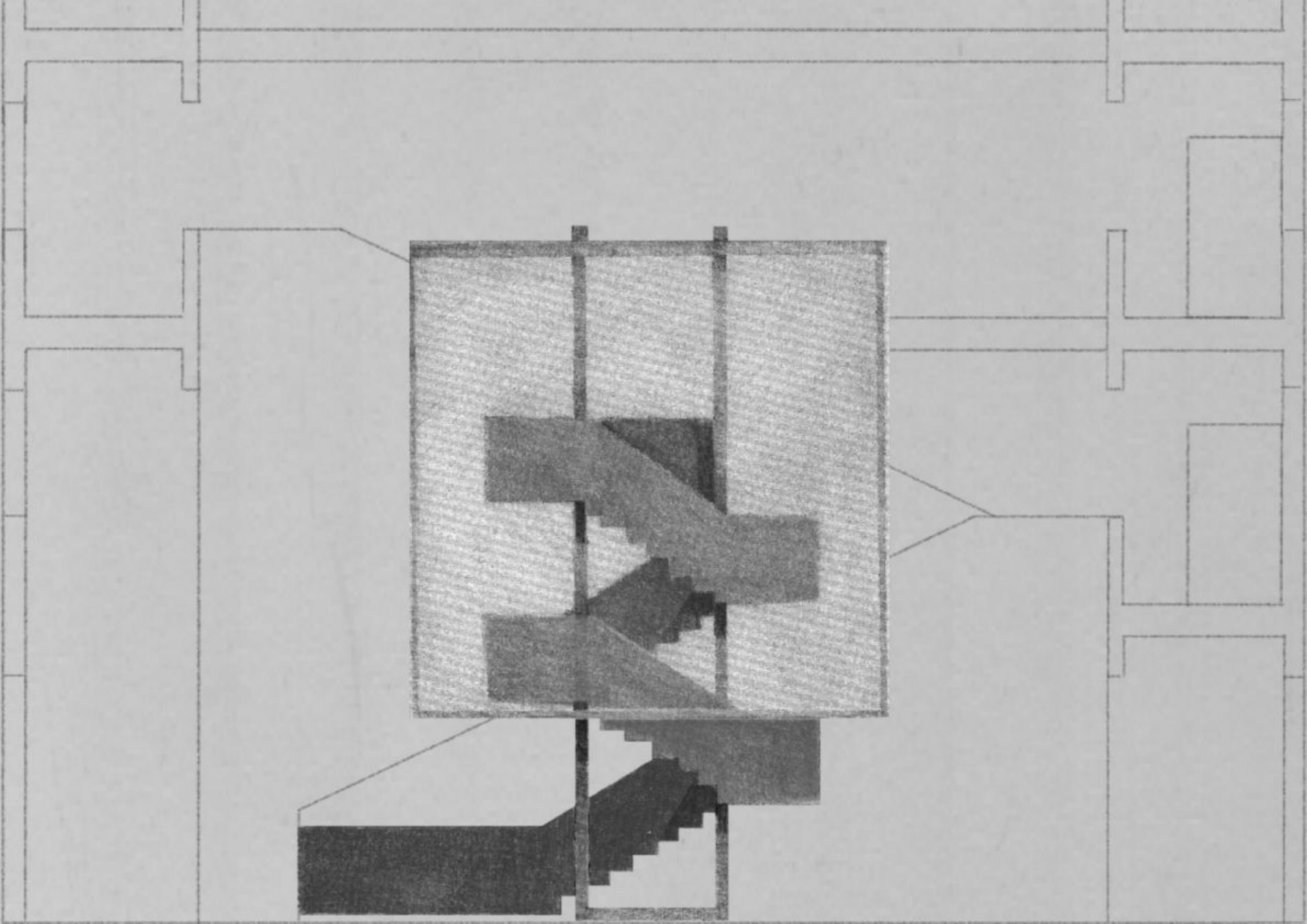
→ vnitřní
↳ místnost
fotografii

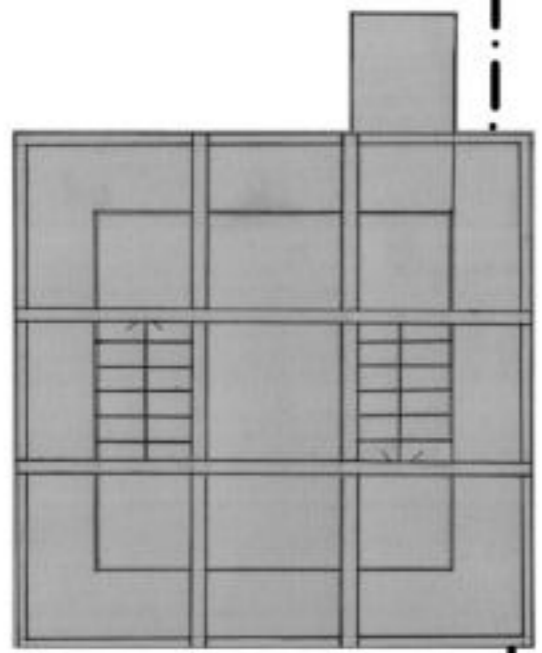






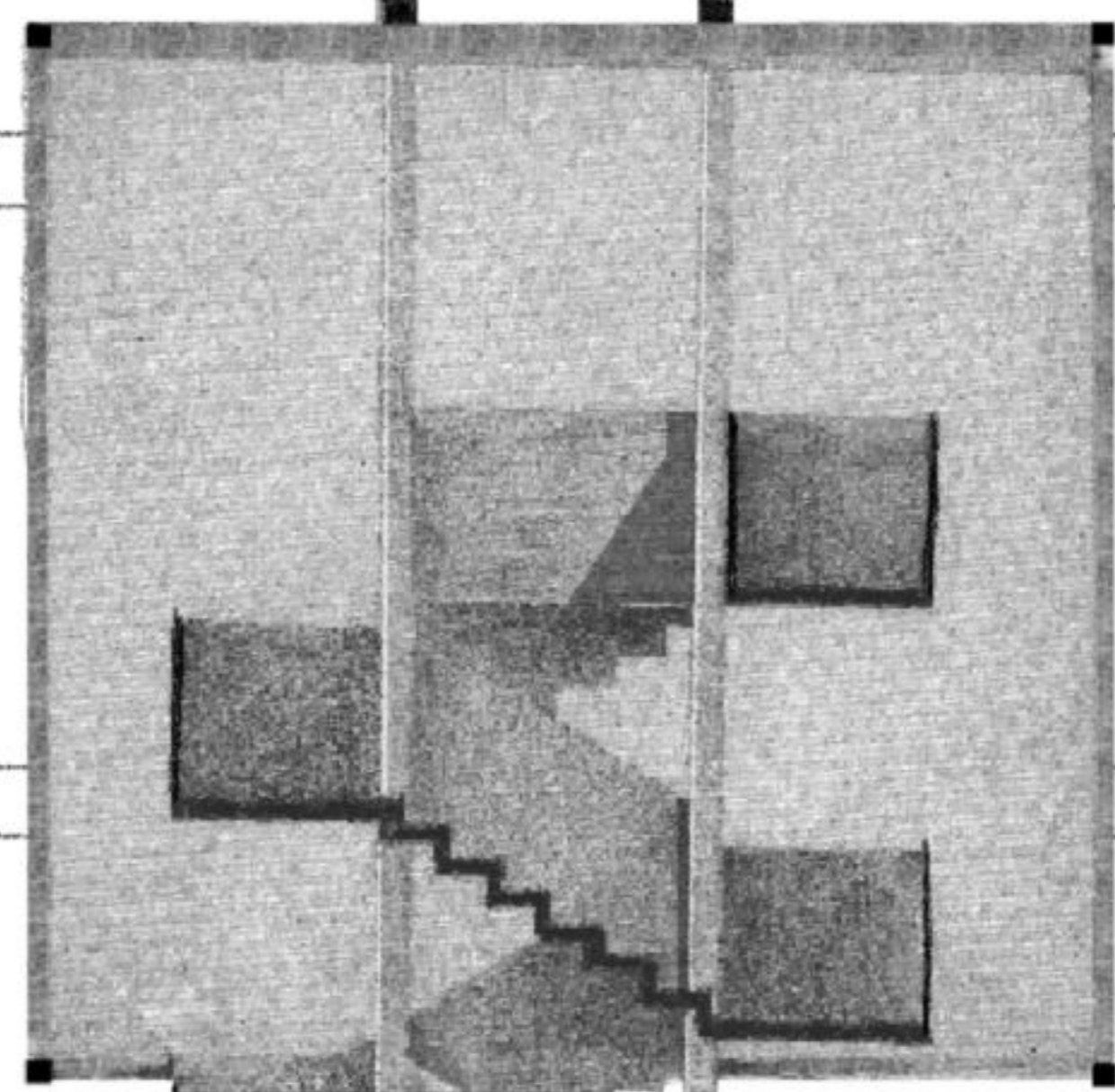




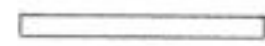
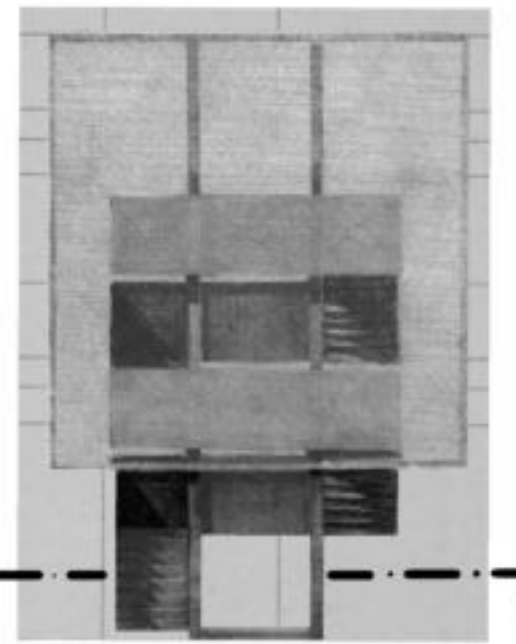
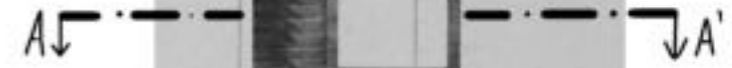
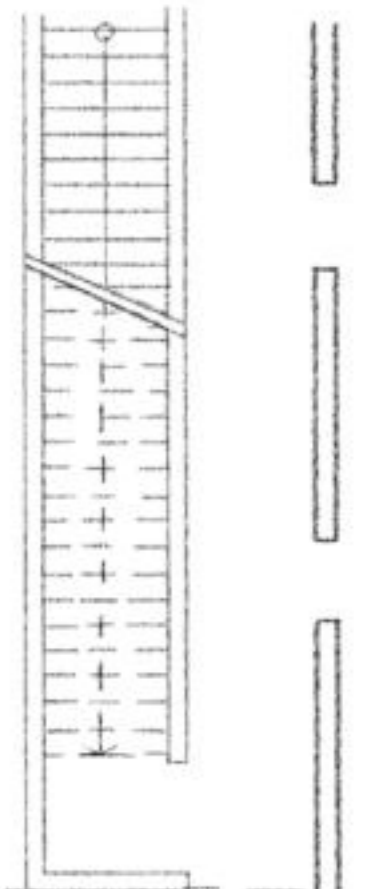
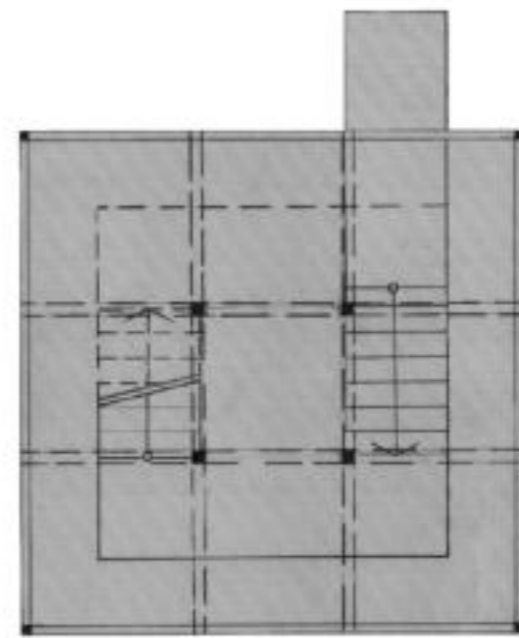
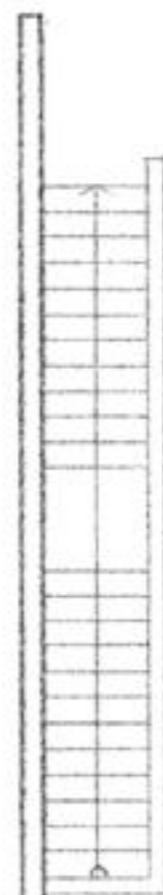
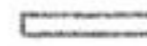
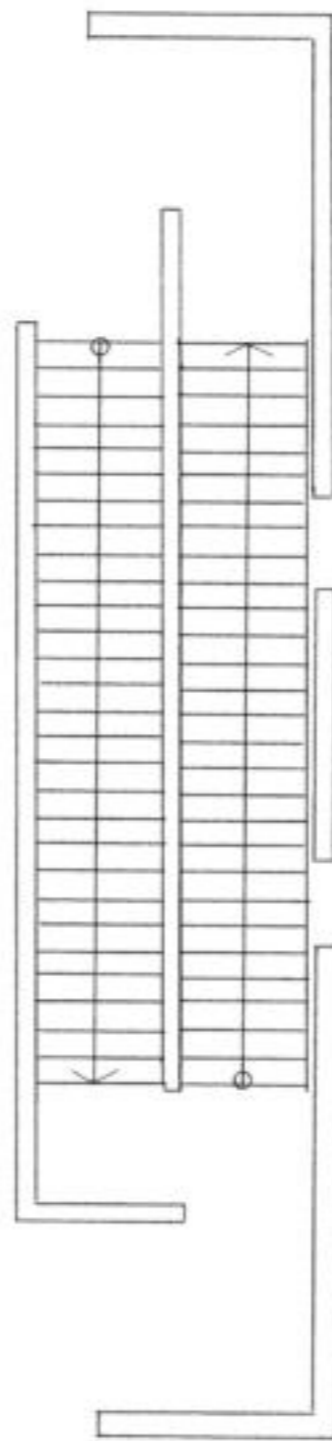
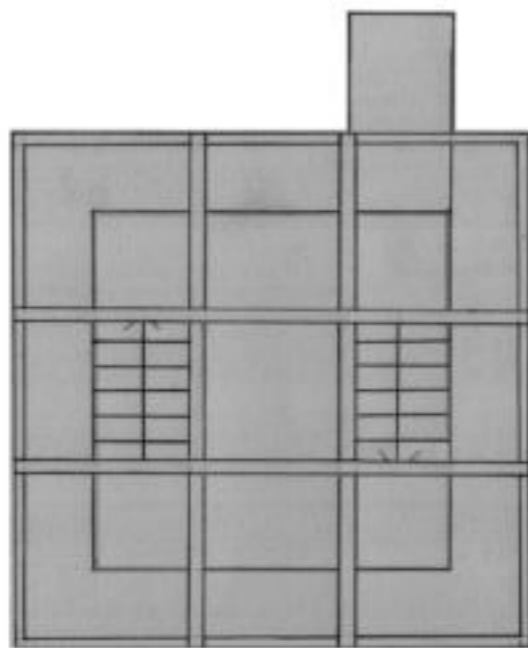
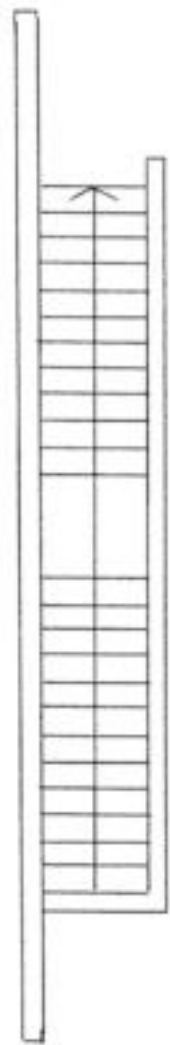
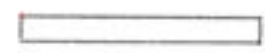


B' ↑

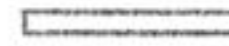
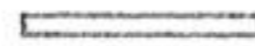
↑ B



REZ BB'



Pidovys



Rēe AA'



Vnitřní konstrukce



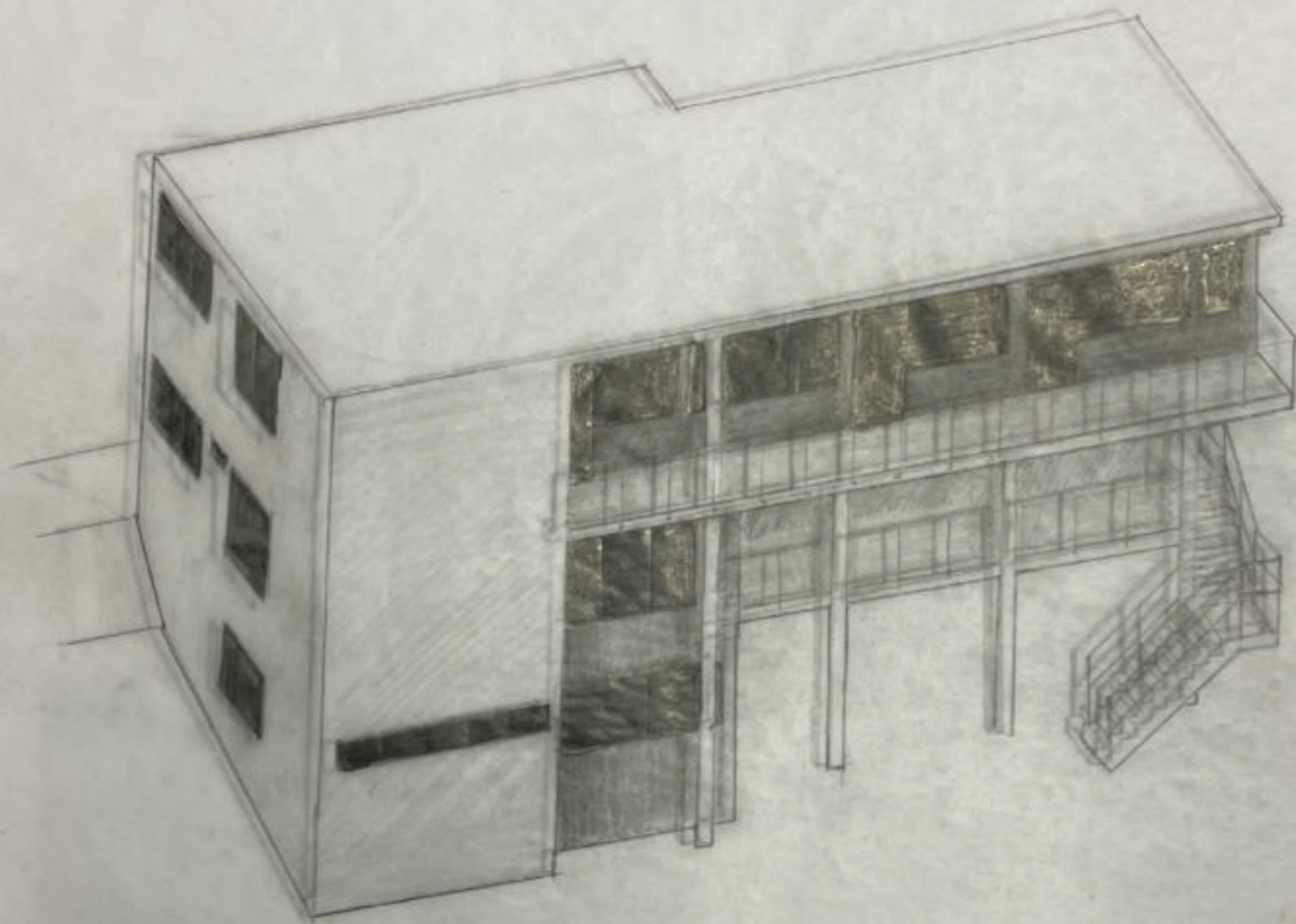
Situace - zasazení do severního atria



ZADÁNÍ - **FRAGMENT** - VEČEŘA ONDŘEJ - PALIČKOVA VILA
VOLNÁ KOMPOZICE SE VZTAHEM K REFERENČNÍ STAVBĚ - ATELIÉR ZAN - BEDNÁŘOVÁ - KOUBEK



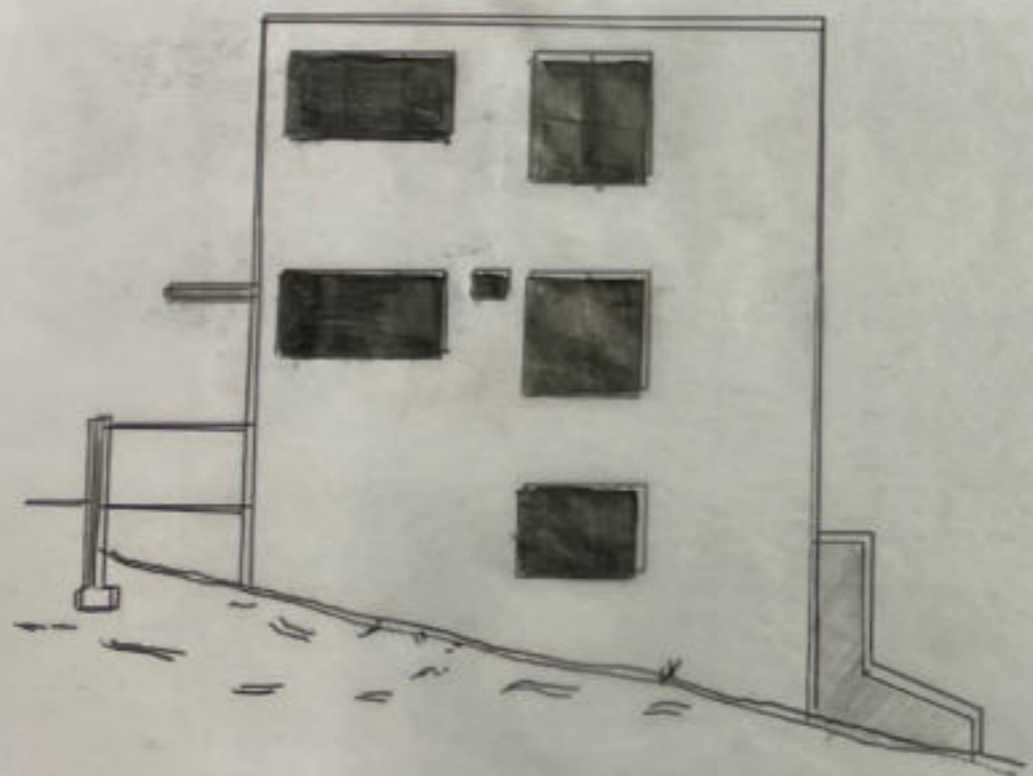




Prace dne 1/8 1931

ing. Arch. Jm. Palíčka

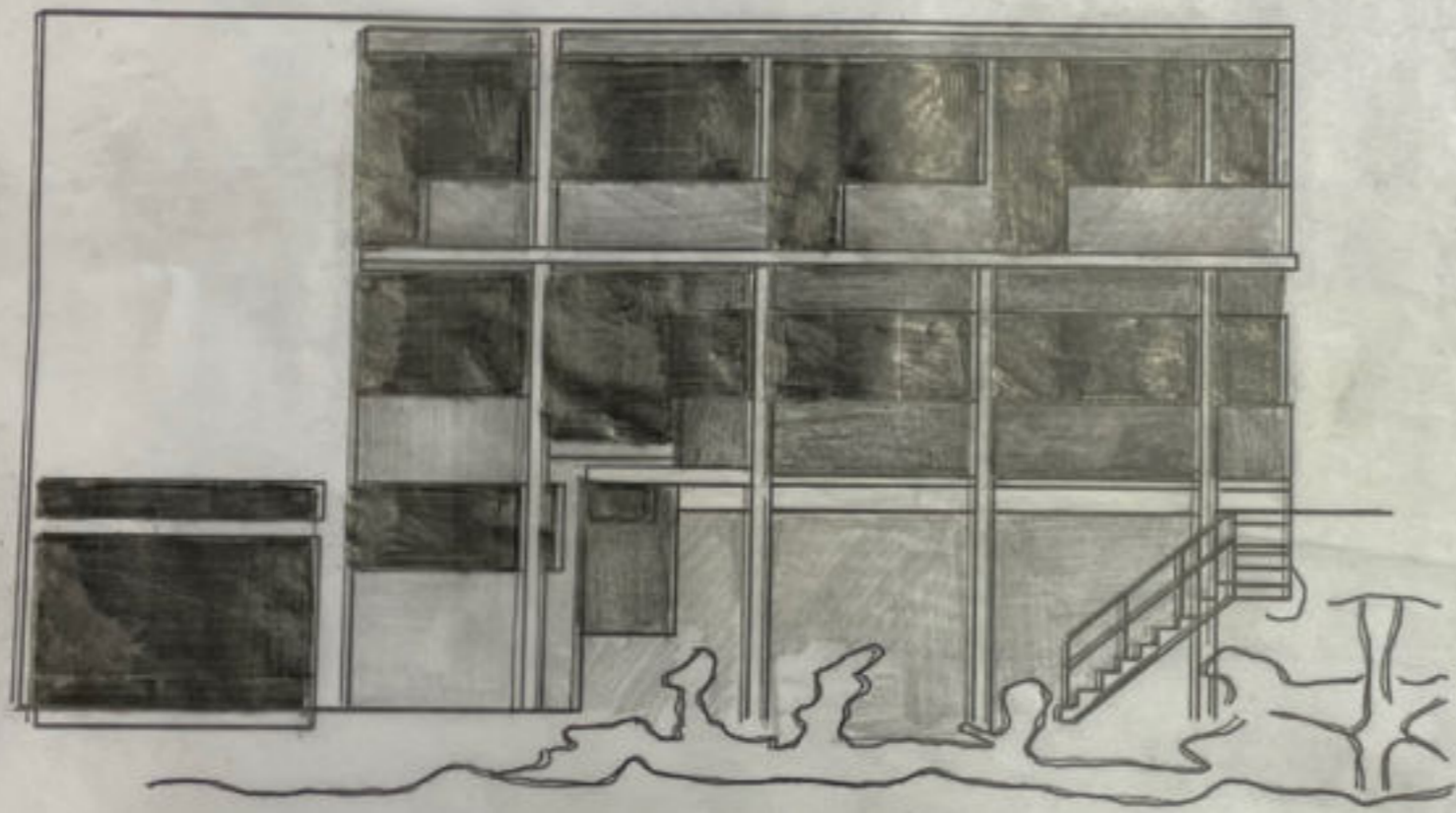
Janis Palíčkovi



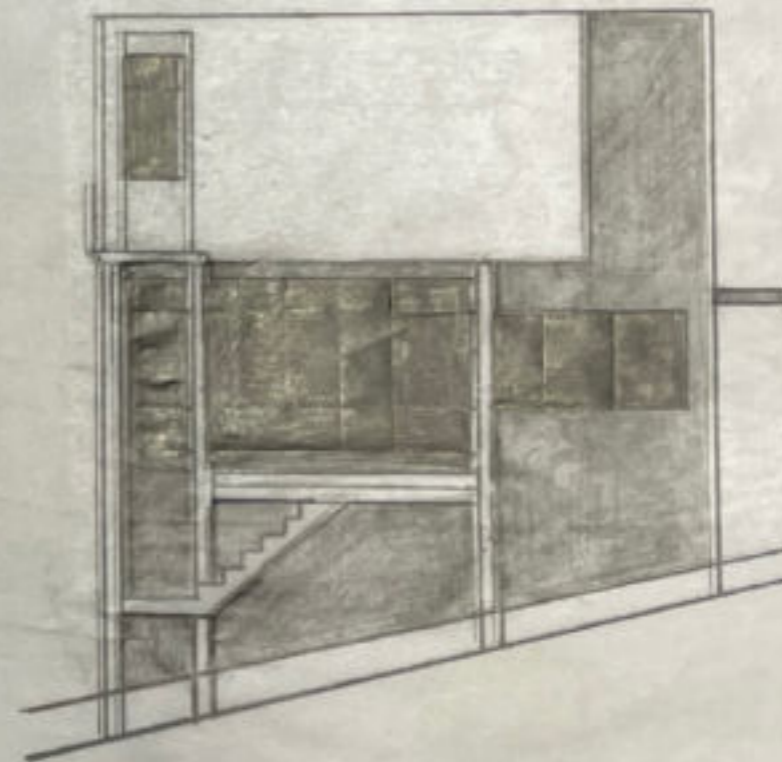
ZÁPADNÍ PRŮČELÍ



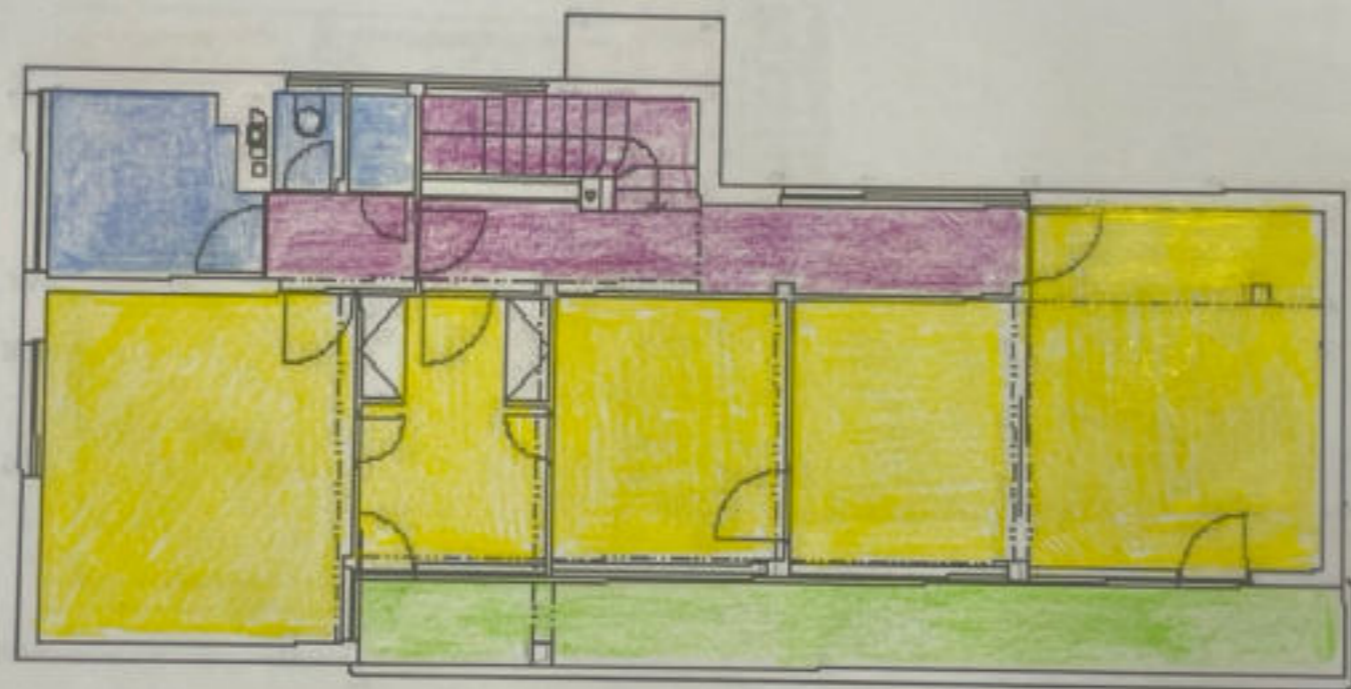
SEVERNÍ PRŮČELÍ


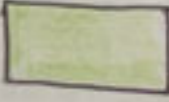
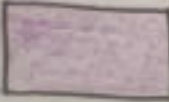
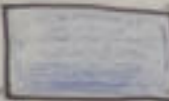


JIŽNÍ PRŮČELÍ

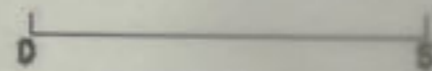
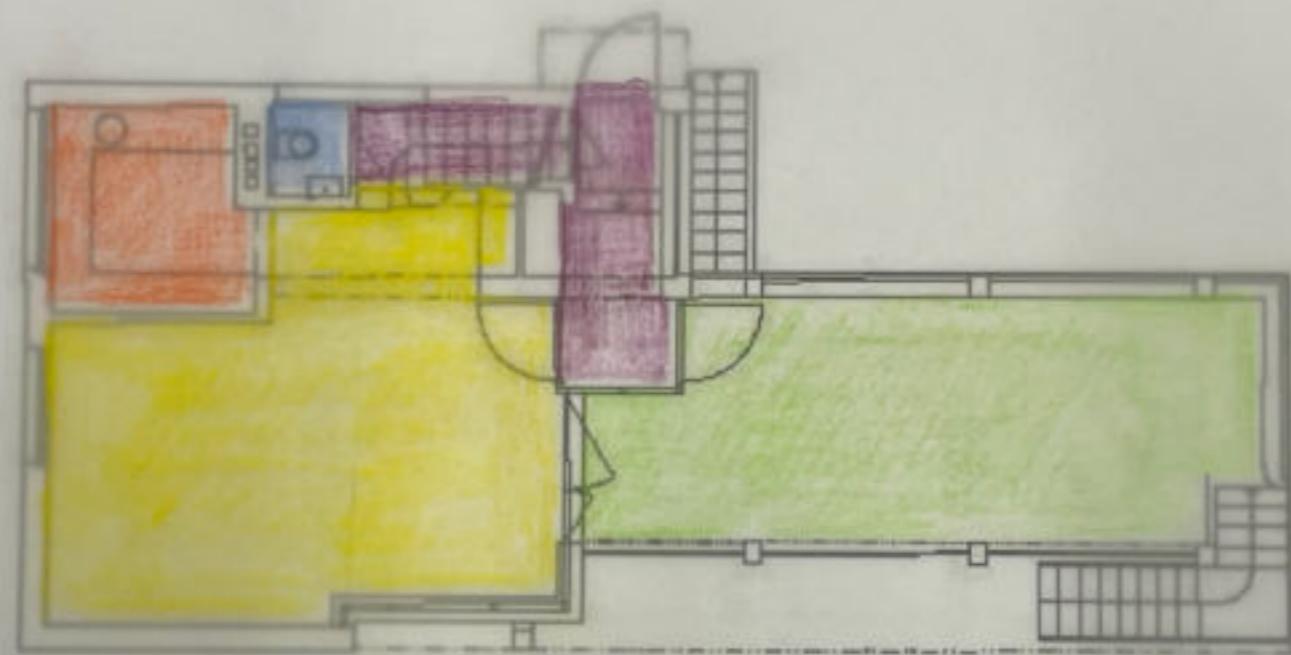






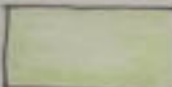
VÝCHODNÍ PRŮČELÍ



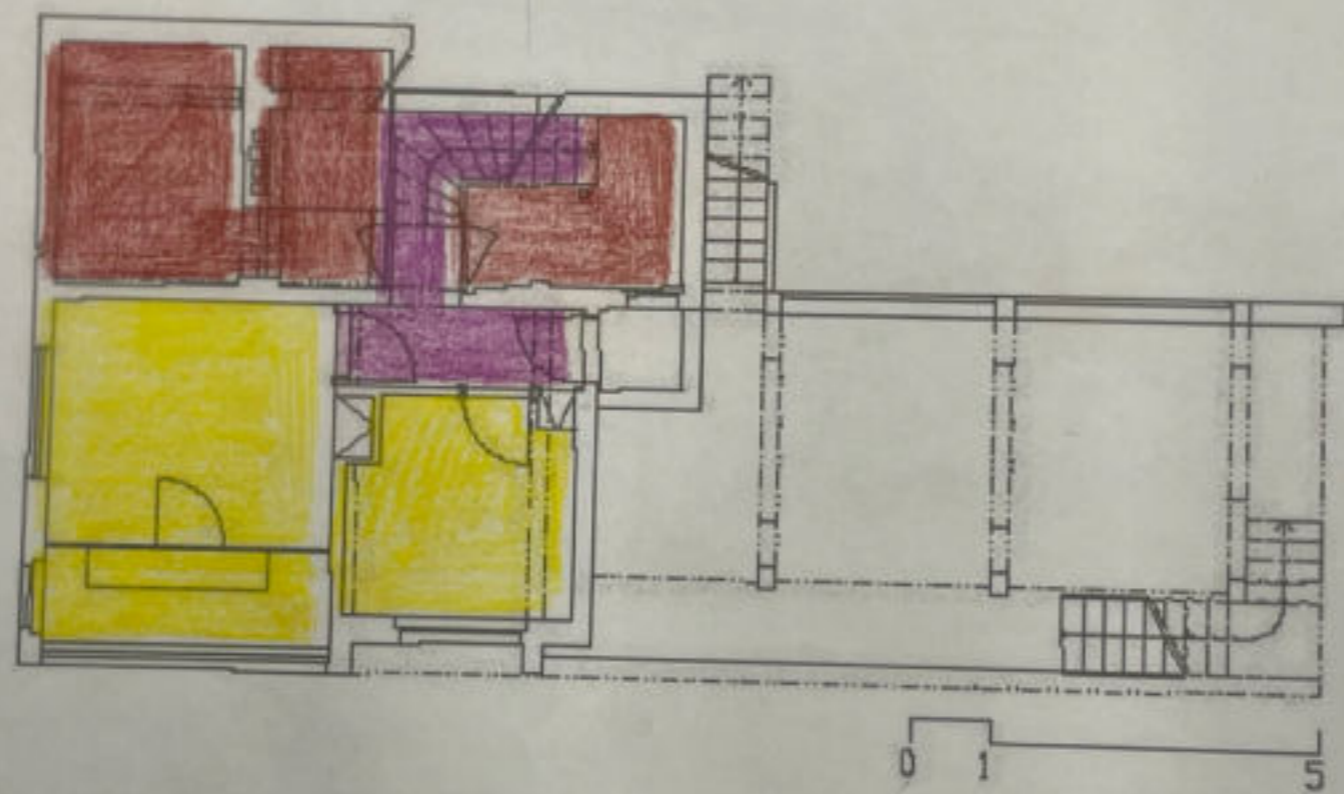
-  OBYTNÉ PROSTORY
-  BALKON
-  CHODBA
-  KOUPELNA + WC




PŮDORYS 1. PATRO M 1:100



-  SPOLEČNÉ OBYTNÉ PROSTORY
-  CHODBA
-  WC
-  KUCHYŇ
-  TERASA

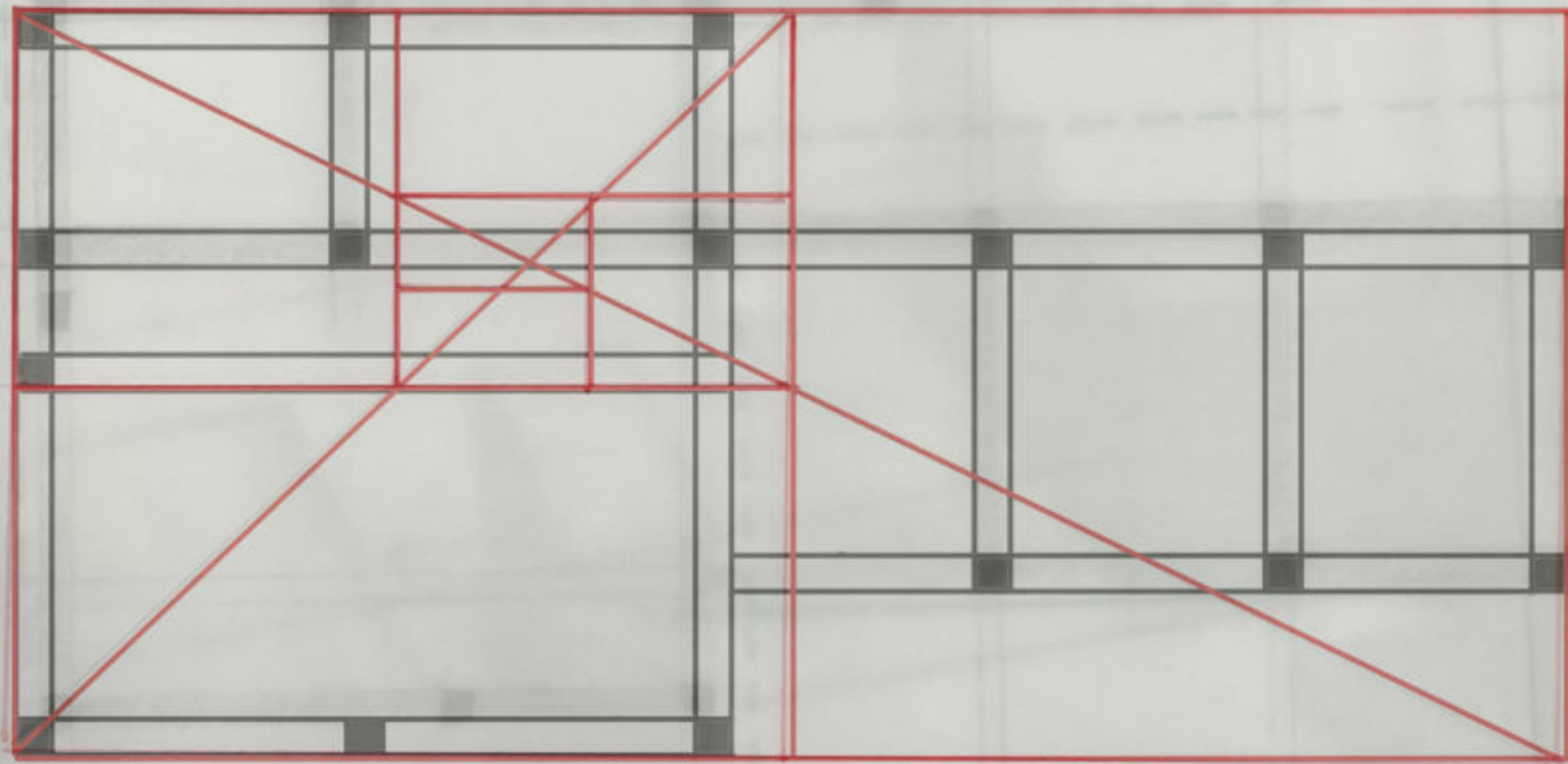
PŮDORYS PŘÍZEMÍ M 1:100



-  OBYTNÉ PROSTORY
-  SKLEPNÍ PROSTORY
-  CHODBA

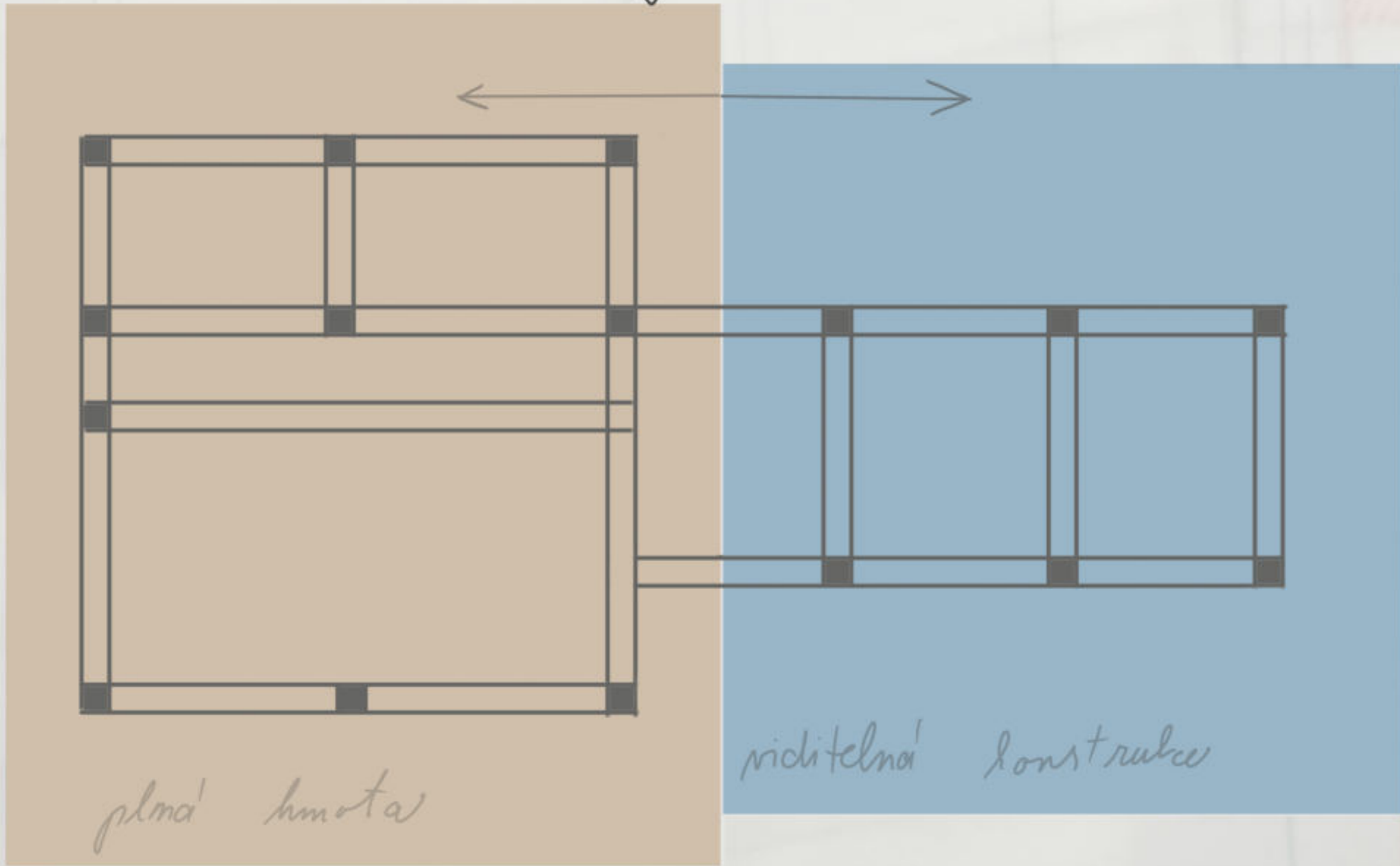
PŮDORYS SUTERÉN M 1:100

Palichova vila - nosné sloupky



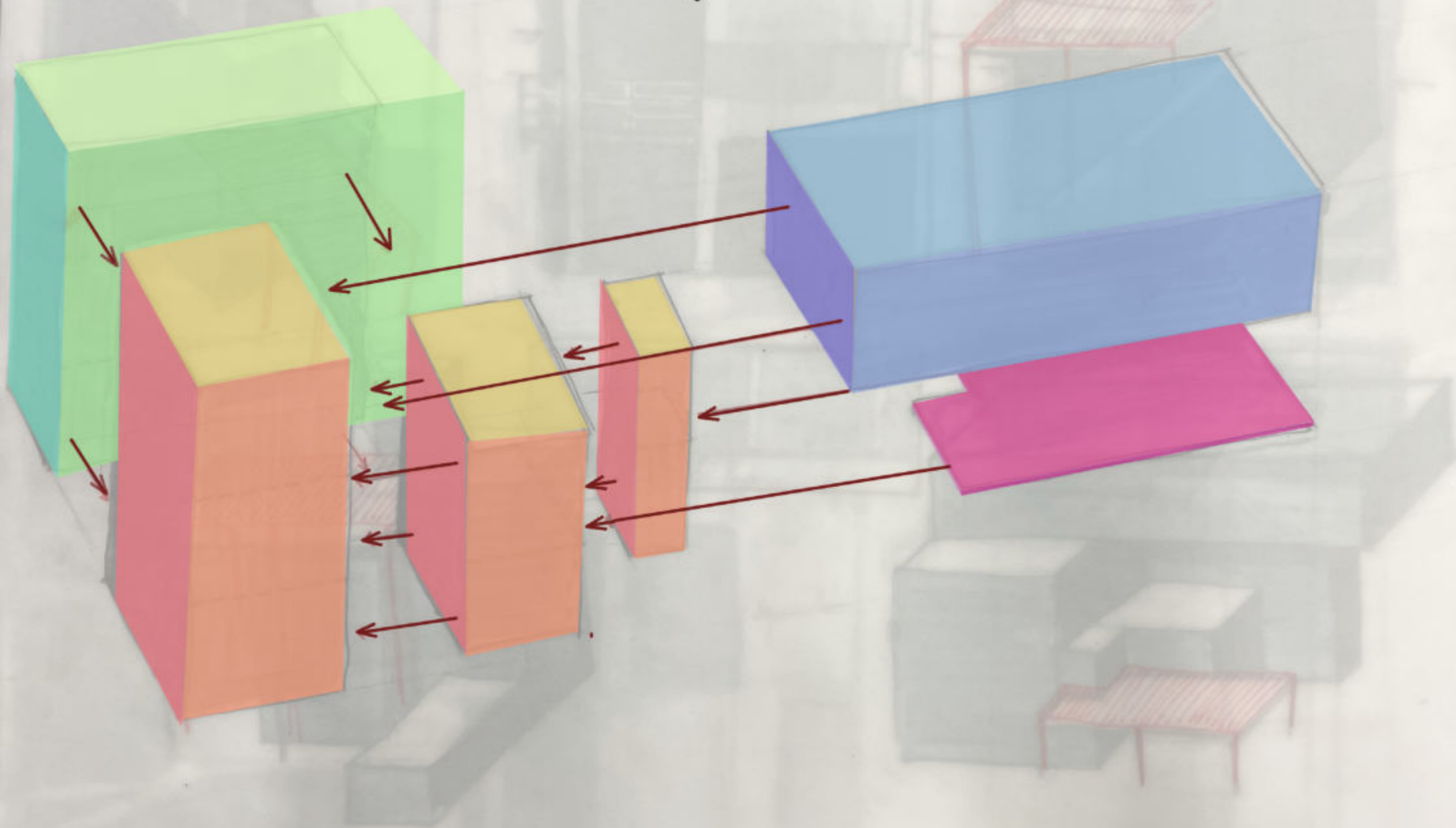
hledání poměru v nosné konstrukci vilky

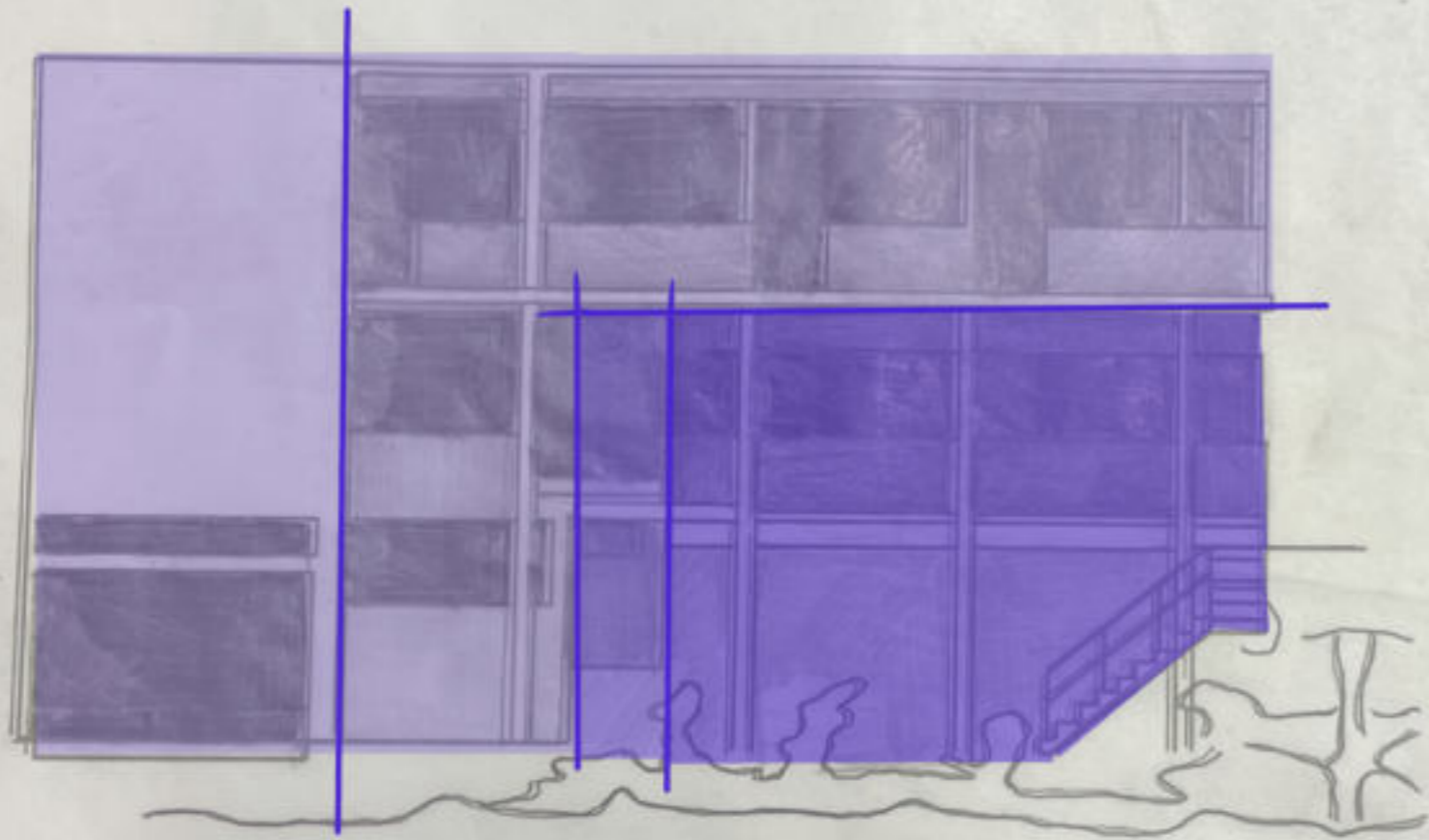
Paliciora rila-norne' sloupy



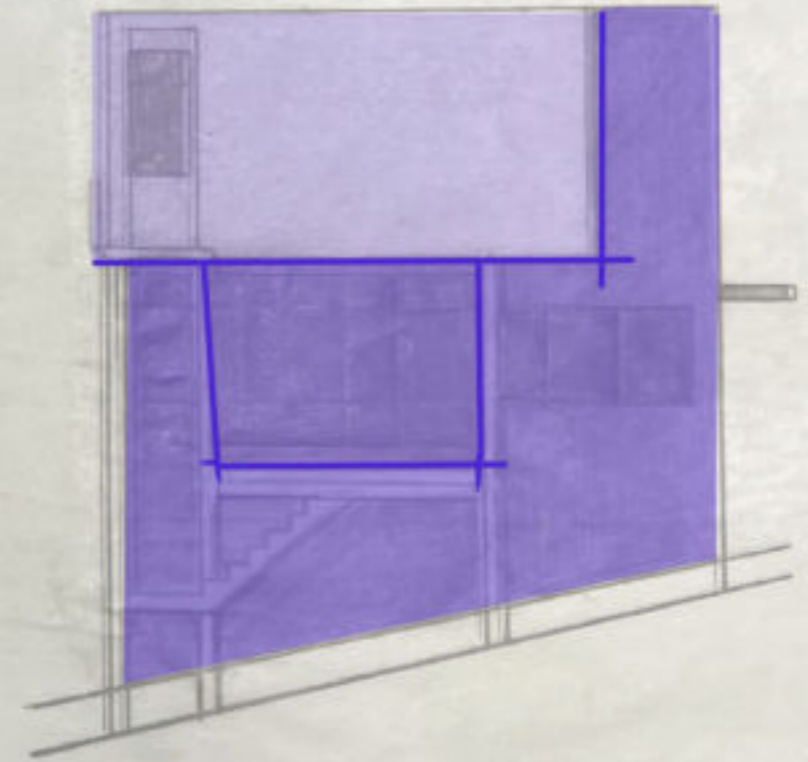
kontrast - dulecity'

Hmotová skladba budovy

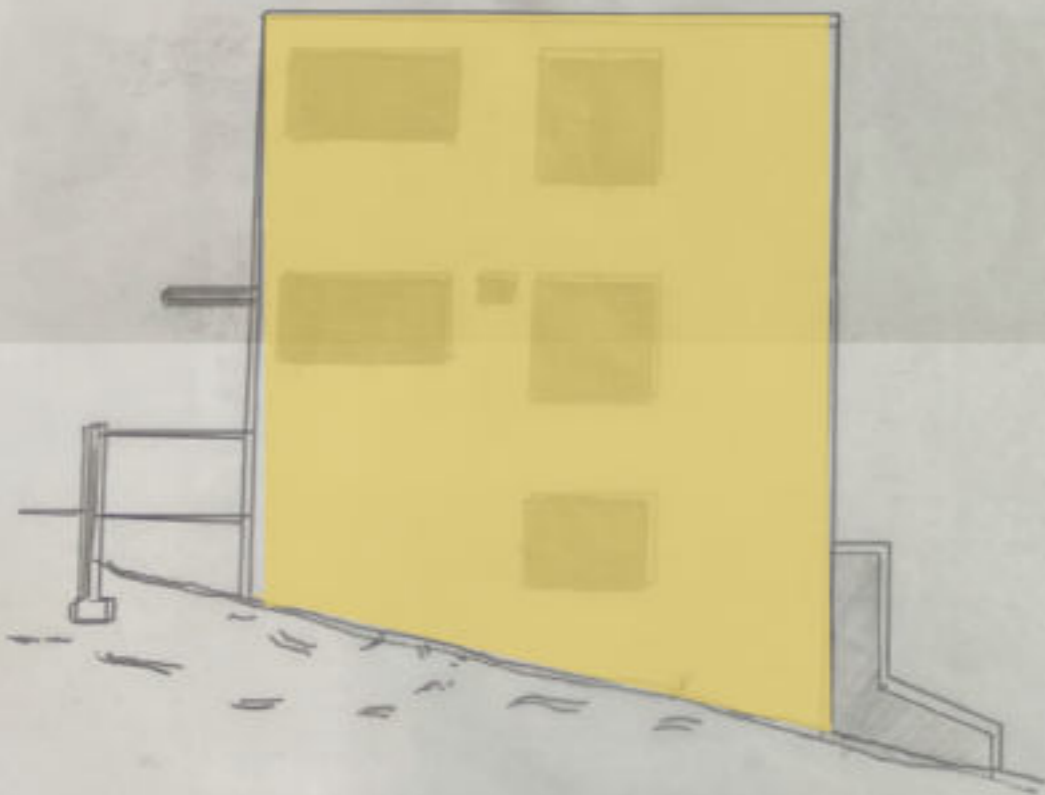




JIŽNÍ PRŮČELÍ



VÝCHODNÍ PRŮČELÍ

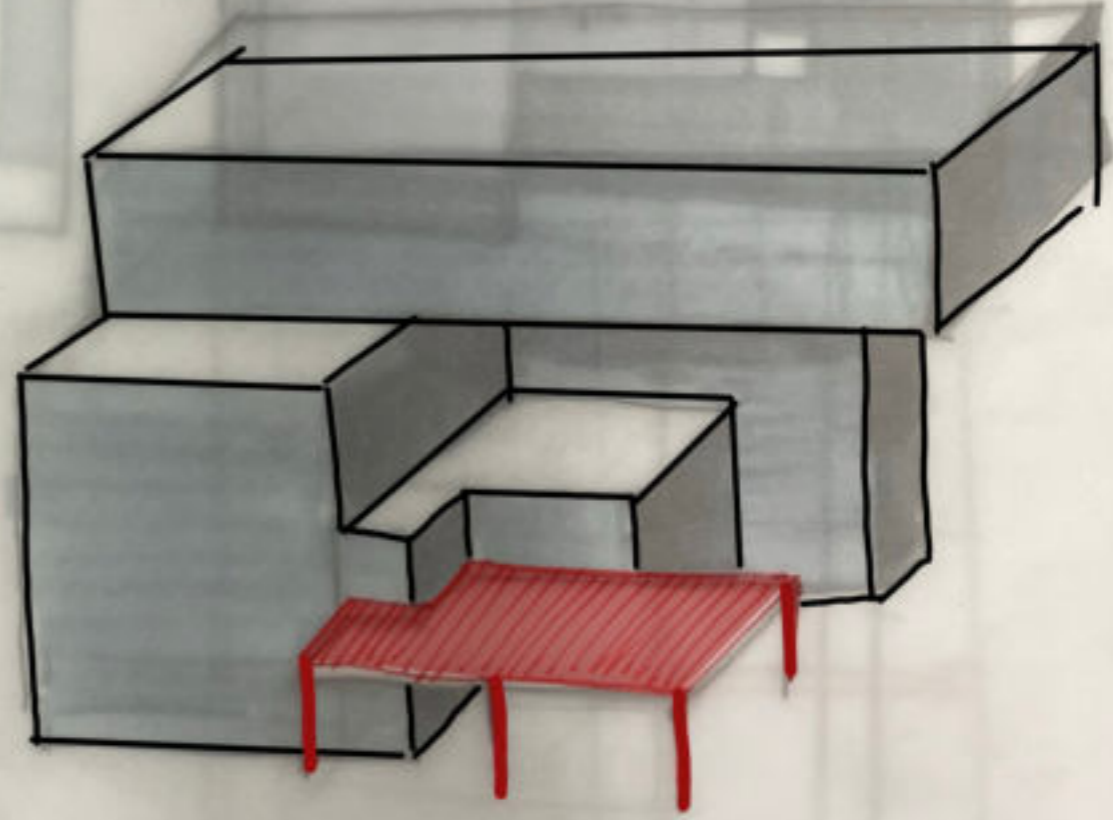
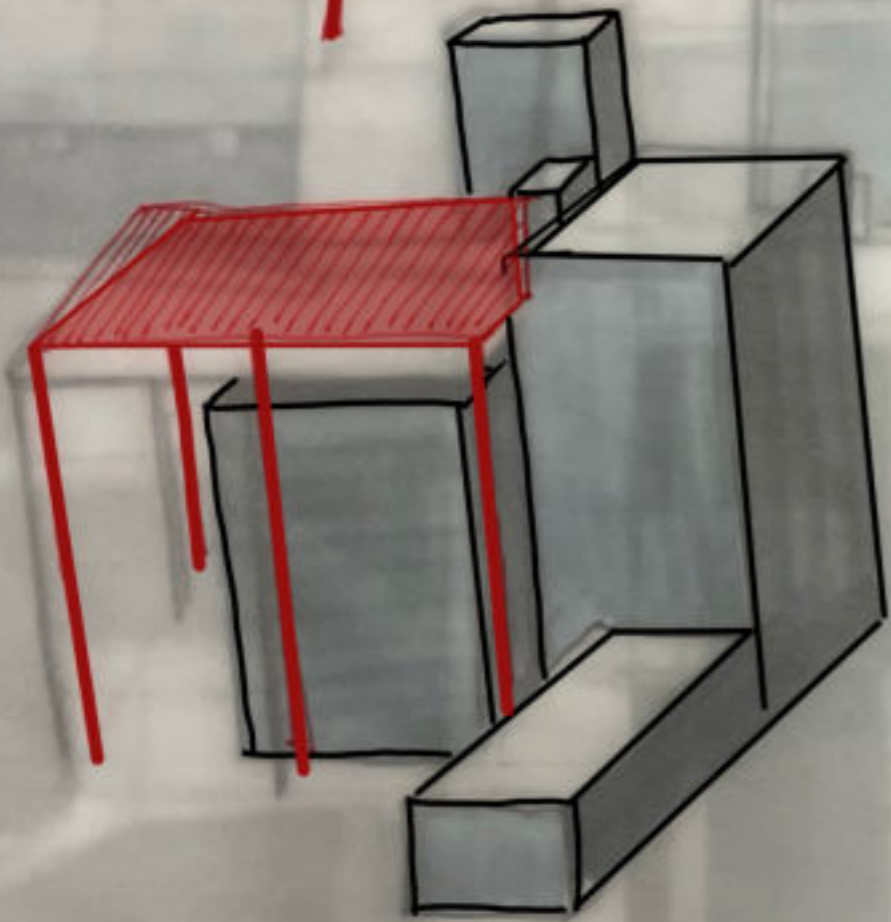
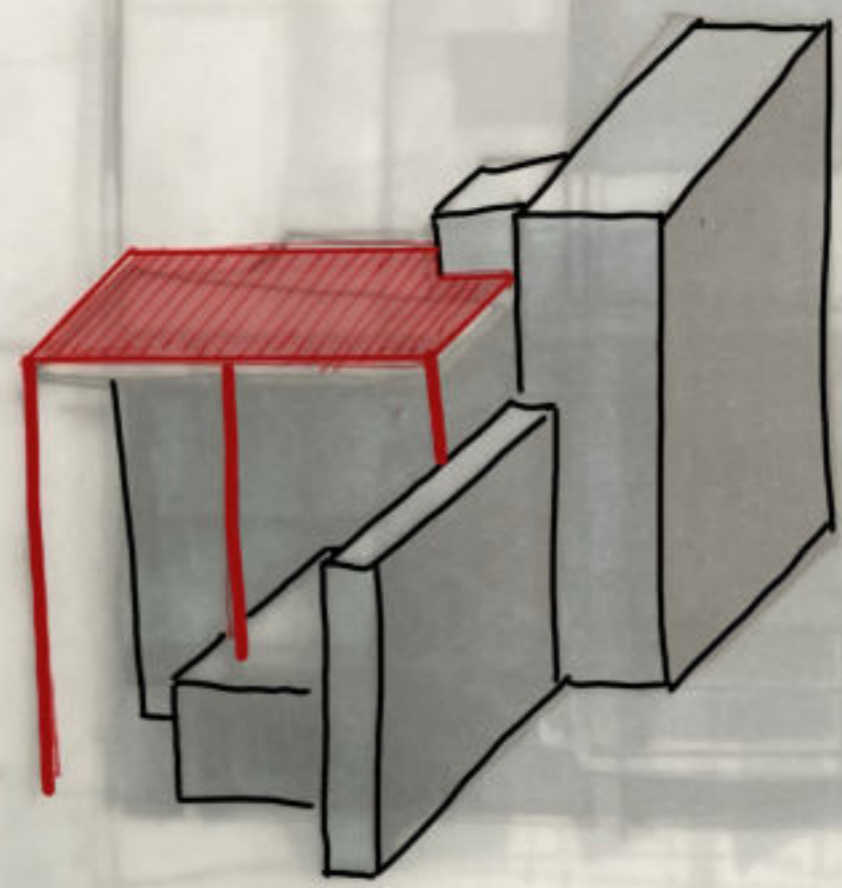
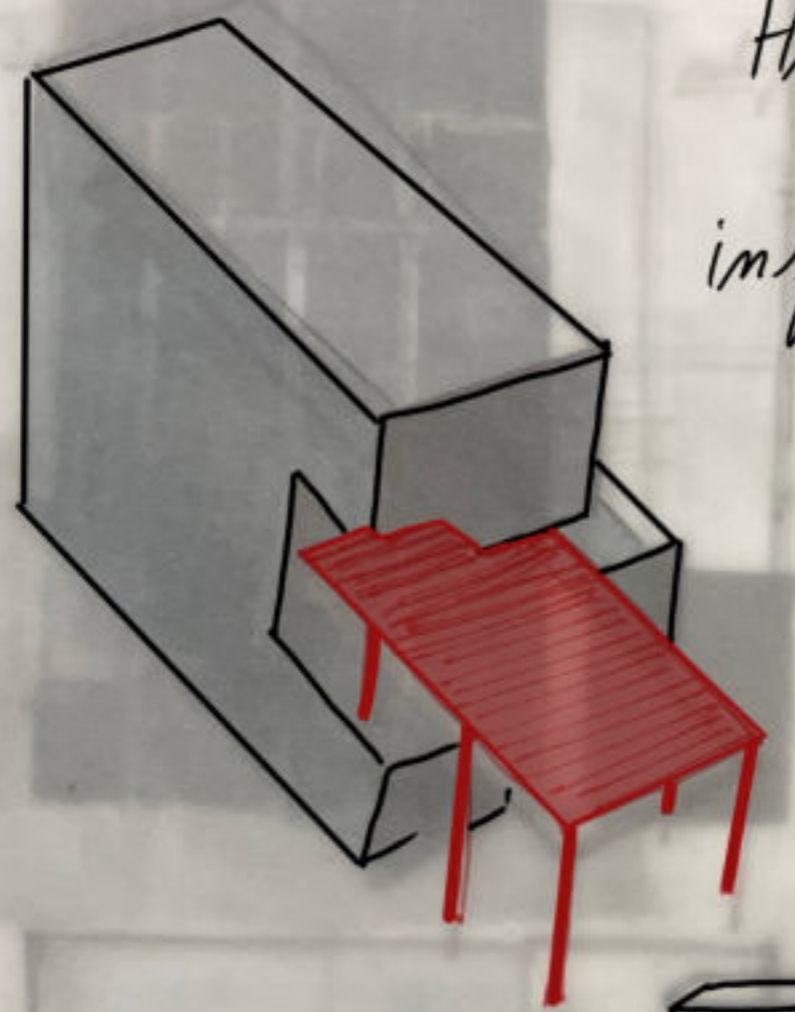


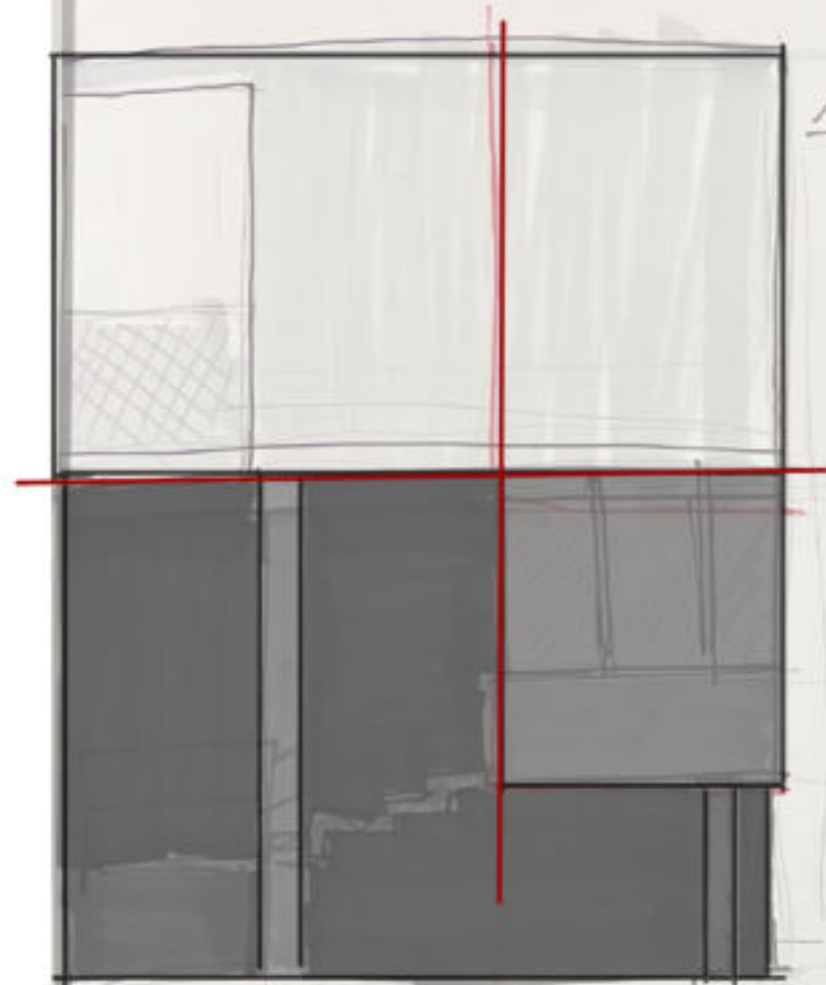
ZÁPADNÍ PRŮČELÍ



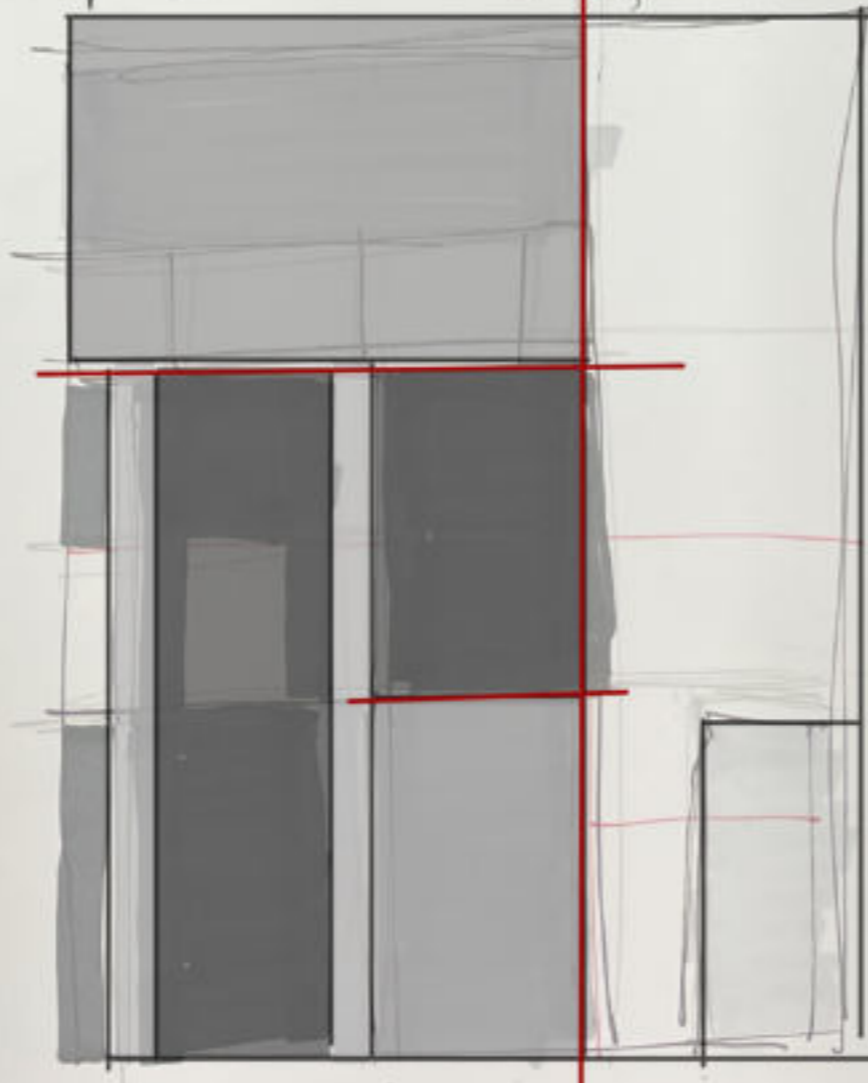
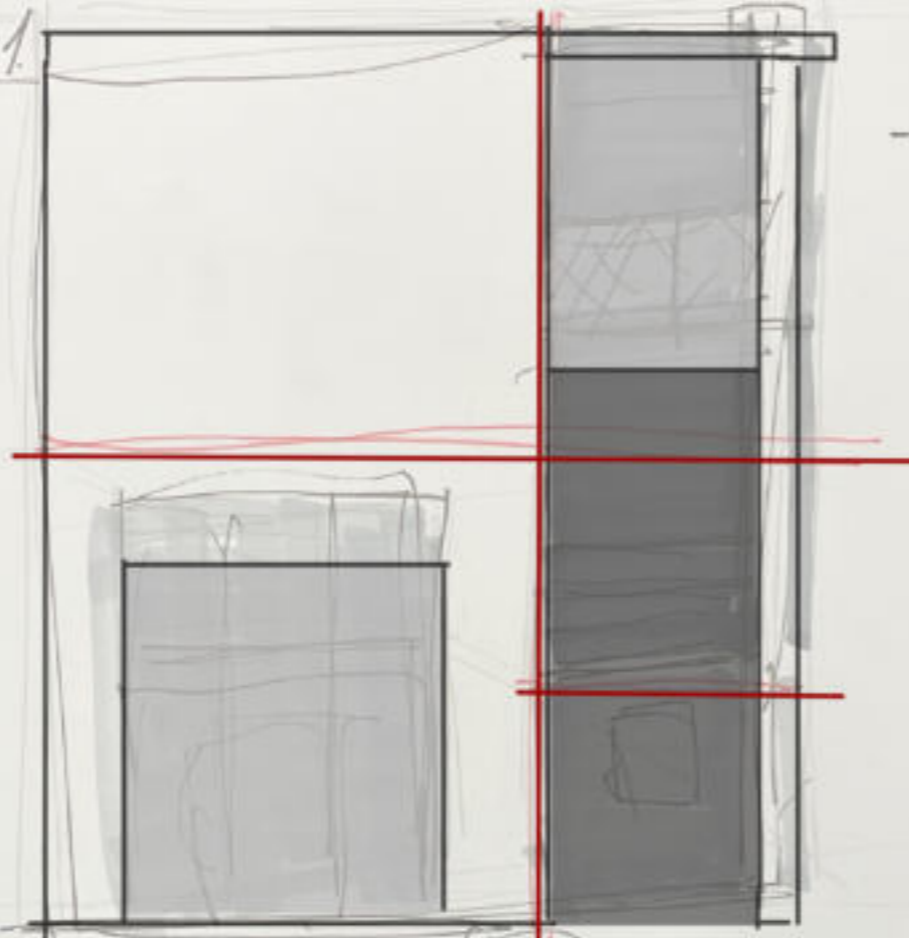
SEVERNÍ PRŮČELÍ

Hmotoví koncepty
inspirované Paliclovou mlou

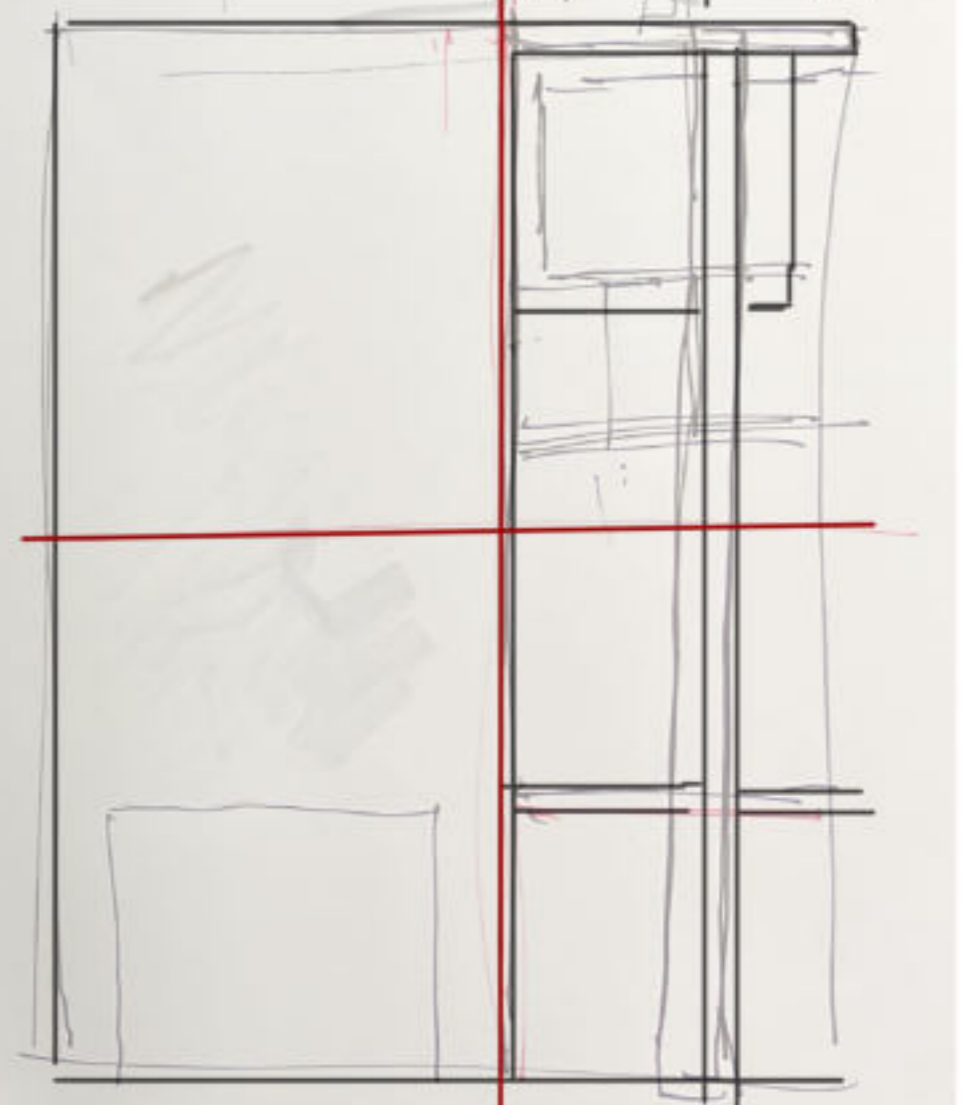


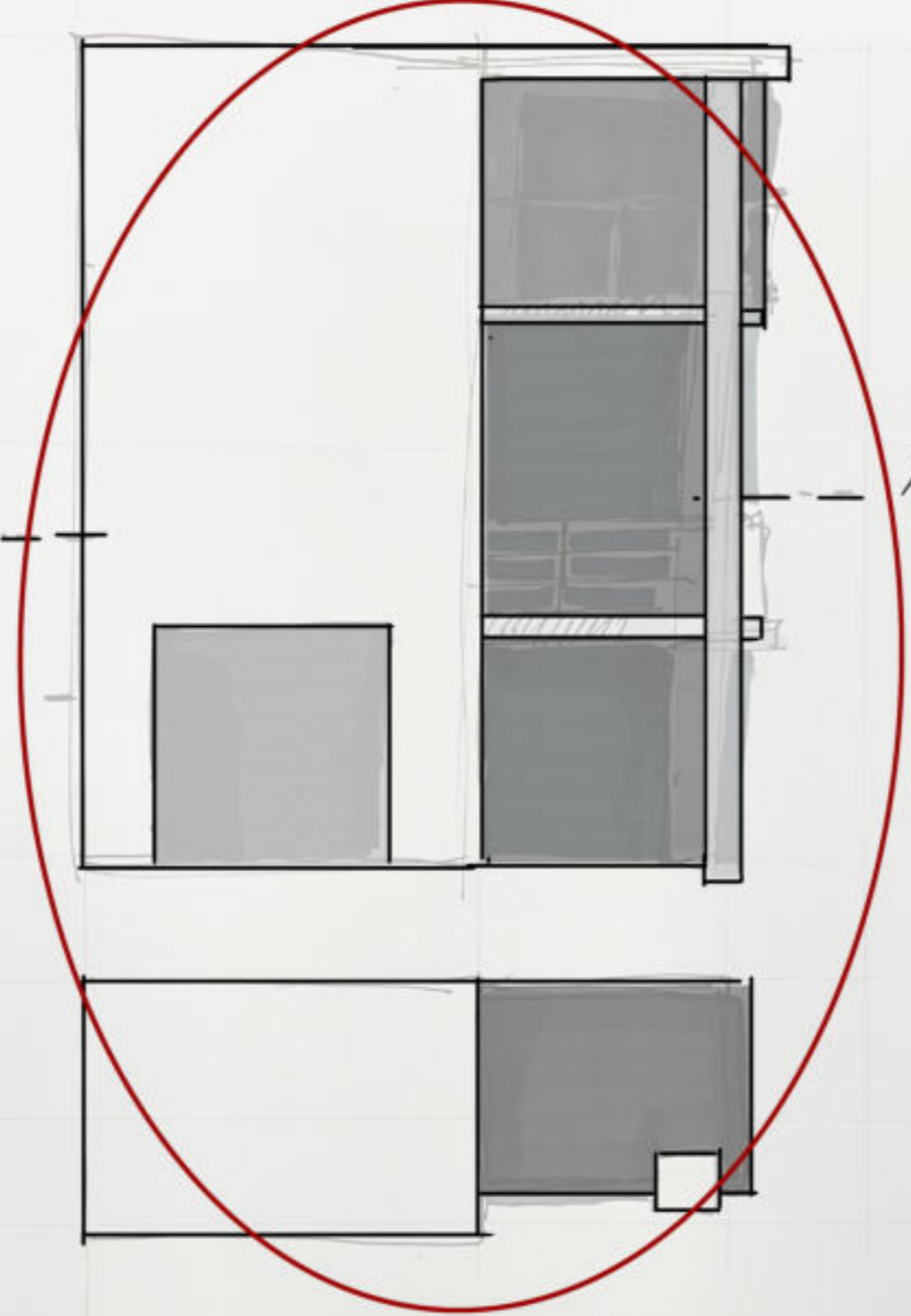
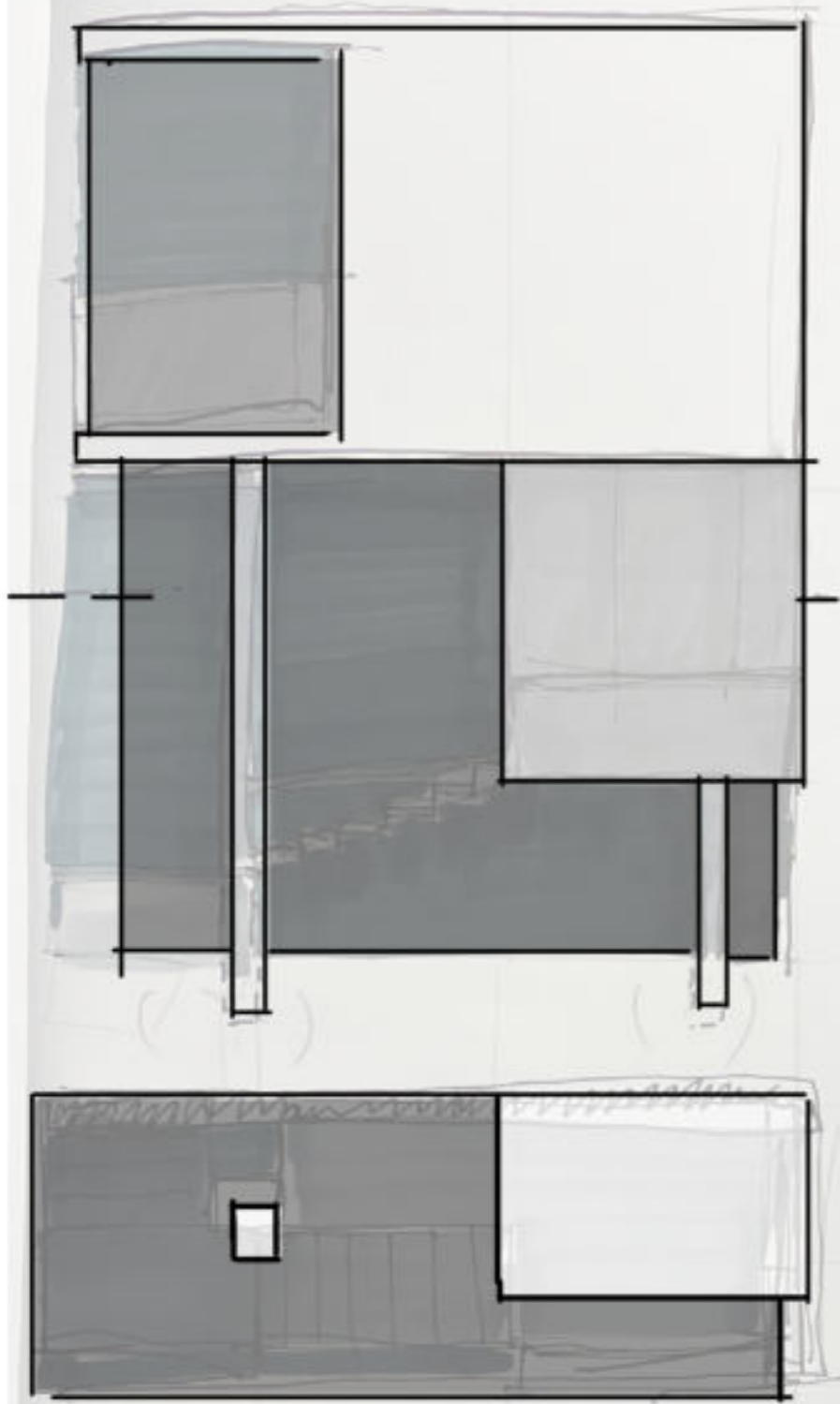


relief ε1



magpale





režisra' normal

nytēsny' māvsh

