

# CZ2

The image shows a large-scale architectural model of a landscape, likely a mountainous region. The model is covered with a grid of small squares, each containing different elements like buildings, roads, and vegetation. A prominent green path or river runs through the center of the model. The model is displayed in a gallery or museum setting, with scaffolding and lighting visible on the right side. The text 'CZ2' is overlaid in large white letters at the top left.

**Visions for the  
future of the  
Czech Republic**

# Table of contents

**Visions for the future of the Czech Republic – Manifesto**

**CZ in need of holistic vision(s)**

**Project path**

**From CZ0 to CZ2 – Methodology**

**CZ0 – History**

**CZ1 – Present**

**CZ2 – Future**

**CZ2 Next – Future of the project**

**Exhibition variants**

**Tour**

**Platform**

**Credits**

# Visions for the future of the Czech Republic – Manifesto

The Czech Republic is a land of promise, offering a sense of serenity amidst a troubled world. Nestled behind the mountains of Central Europe, this hidden gem provides clarity and opens the door to new possibilities.

However, the core values of the European dream – peace, freedom, democracy, equality, human rights, and a sustainable environment – are under threat. The urgency of the climate emergency and the recent challenging events demand a shift in mindset and immediate action. It is crucial that we stand together, united and resolute.

Now is the time for our voices to be heard.

What is the true potential of the Czech Republic? What role can it play at the heart of Europe? How can it lead us toward a better future? These questions require bold actions and solutions. Through design, let us reimagine the possibilities, ignite inspiration, chart new directions, and foster meaningful discussions on design for urban density, regional balance, decarbonisation, health, population growth, self-sufficiency, new forms of governance, etc.

The CZ2 project and exhibition delves into the past, the present, and the dreams for the future of the Czech Republic.

**Over 150 students from across the Republic and the rest of the world have collaborated to share their visions.**

The collection of ideas displayed on the 1:20 000 map of the country and in the spaces around it, together with the interviews with a myriad of specialists and stakeholders, are an invitation for the public to actively shape our collective destiny.

These ideas serve as a catalyst, inspiring us to take action.

**We extend a heartfelt invitation to join us in this journey of imagination. To form a discussion platform that is democratic, transparent, impartial, and accessible to all.**

The more who join, the greater our collective impact will be.



# CZ in need of holistic vision(s)

*"You have created a wave of hope and energy in the past months. I would like us to use it to create a common vision for the Czech Republic. I would like to start this process during my presidency. Our reactions to the crises of recent years, as well as the presidential election, have convinced me that we can unite behind one goal, even though we see different ways to achieve it. We just need that spark of determination that it makes sense."*

– Petr Pavel, Czech president  
inauguration speech

Prague castle, 9. 3. 2023



Petr Pavel at his inauguration  
talking to Czech people



# Project path



## Dean seeking visions

A CTU's newly elected dean Dalibor Hlaváček (on the left) aimed to bring new visions to architectural education through international collaboration with guest professors. A new studio was established to introduce internationally renowned personalities, current topics, and innovative teaching methods.

A Dutch architect and urban planner Winy Maas (on the right) became the first guest professor to lead the studio in the academic year 2022/23. His approach and guidance became an inspiration for the academic community and education – also in the form of testing new ways of using and infilling the faculty's building.



## How to design the country

At the beginning of the process, tutors from 5 universities in CZ and NL met to discuss possibilities of mutual collaboration on the topic of the country's future. The aim was set to involve around 150 international students in proposing visions for positive change and a new arrangement of the country, CZ2.

The first workshop held at FA CTU allowed all students to meet, discuss, organize, and confront their data findings and ideas for the first time. These ideas were then collectively sketched on a large map in a 1:50 000 scale where all the relationships became visible, emerging as a first test of collaboration platform.



## CZ2 Exhibition

The project began with a dream, a vision of 150 young people collectively developing ideas that would be presented on a map, that would literally embrace the spectator. This dream became a reality during the final workshop. The students had to test the models of their ideas while constructing the physical environment at the same time.

The workshop resulted in an exhibition, which showcased the map with models of 100 visions developed throughout the semester. The exhibition encompassed a public presentation unveiling the team's methodology and proposals.



## CZ2 Platform

The workshop, the exhibition presentation, and the entire semester concluded with a panel discussion as a first step in igniting a meaningful discourse about the country.

Throughout the journey, students and tutors witnessed a general lack of visionary strategic planning in CZ, and also the lack of transparency in communicating these visions to the broader professional and general public. To address this, the team reached out to media with a hope to ignite a public discussion and inspire others to join this effort in forming a stable platform for designing the new version of CZ – CZ2.





CZ2 Team gathered under the map of the Czech Republic with ideas developed during the first workshop



# **From CZ0 to CZ2 – Methodology**

**CZ0 – History**

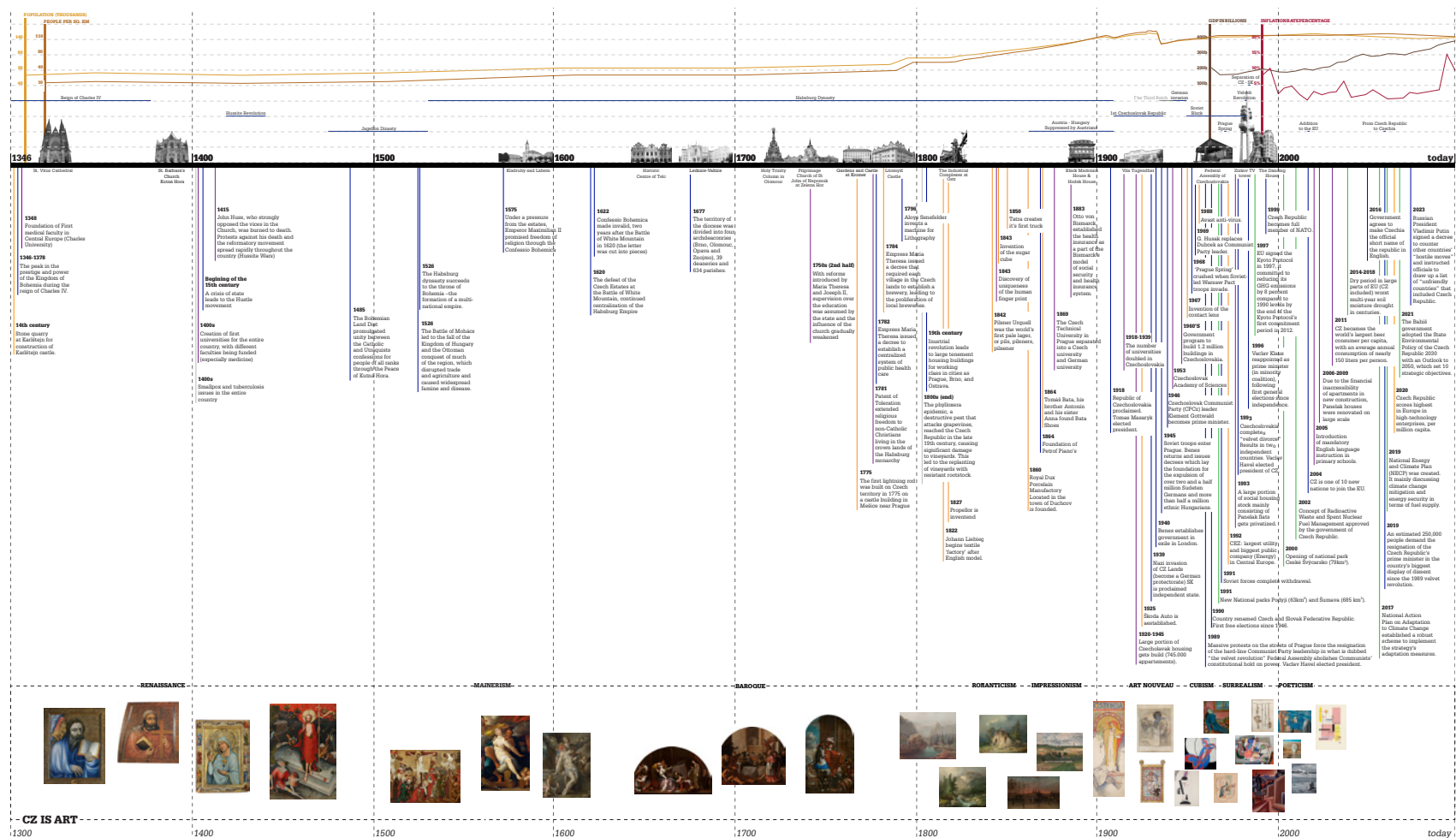
**CZ1 – Present**

**CZ2 – Future**

# CZ0

# History of the Czech Republic

In this timeline, we explored significant milestones of the country through the lens of different agendas including politics, economy, health, as well as art and culture. By doing so, we aimed to understand what the CZ0 was, what the CZ1 is and what the CZ2 could become.





# CZ1

# Observations

The initial stage of our research involved gathering observations of the country to establish a fundamental understanding of CZ.

## CZ is Rail transport

1. How long it is
2. How many train stations it has
3. Number of passengers per year
4. Longest tunnel
5. Longest bridge
6. Highest elevation
7. Operating speed
8. The year of first horse-drawn railway in Europe

### Description:

The majority of passenger services run nowadays are operated by the state company České dráhy (Czech Railways), which until 2007 also managed cargo services now run by CD Cargo. CZ has a dense system of railways, however it isn't very fast.

50.083105081205005

14.435158069360316

Student: Minkyung Shin



Source: <https://www.spravazeleznic.cz/o-nas/vse-o-sprave-zeleznic/zeleznice-cr>





# CZ1

# Maps

Subsequently, we gathered and created detailed maps to further analyse and explore various aspects of the country.

## CZ is Rail transport

### Train track carpet

1. More than 1/3 municipalities have train stations
2. Total system length : 9,619 km
3. operating speed : 160 km/h

#### Description:

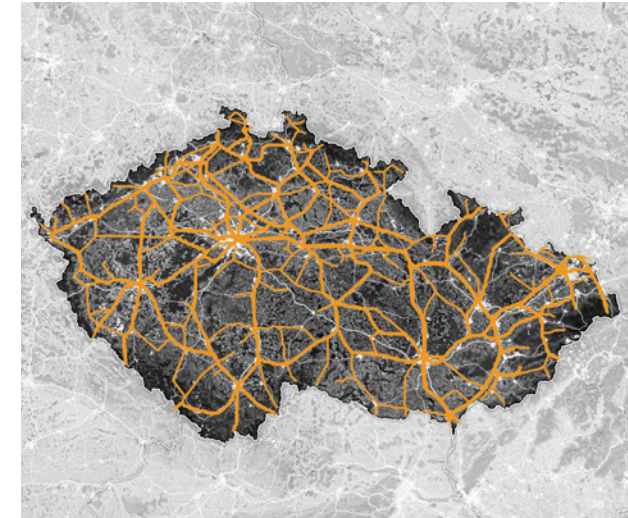
The Czech Republic has a well-developed railway network that provides reliable transportation options for both passengers and goods. You can see in the map, the railway parameter is very dense, but the speed of train is slow. As of 2023, there are 6,256 municipalities in the CZ and 2,808 train stations. With a faster train CZ will be interconnected than ever.

#### Legend:

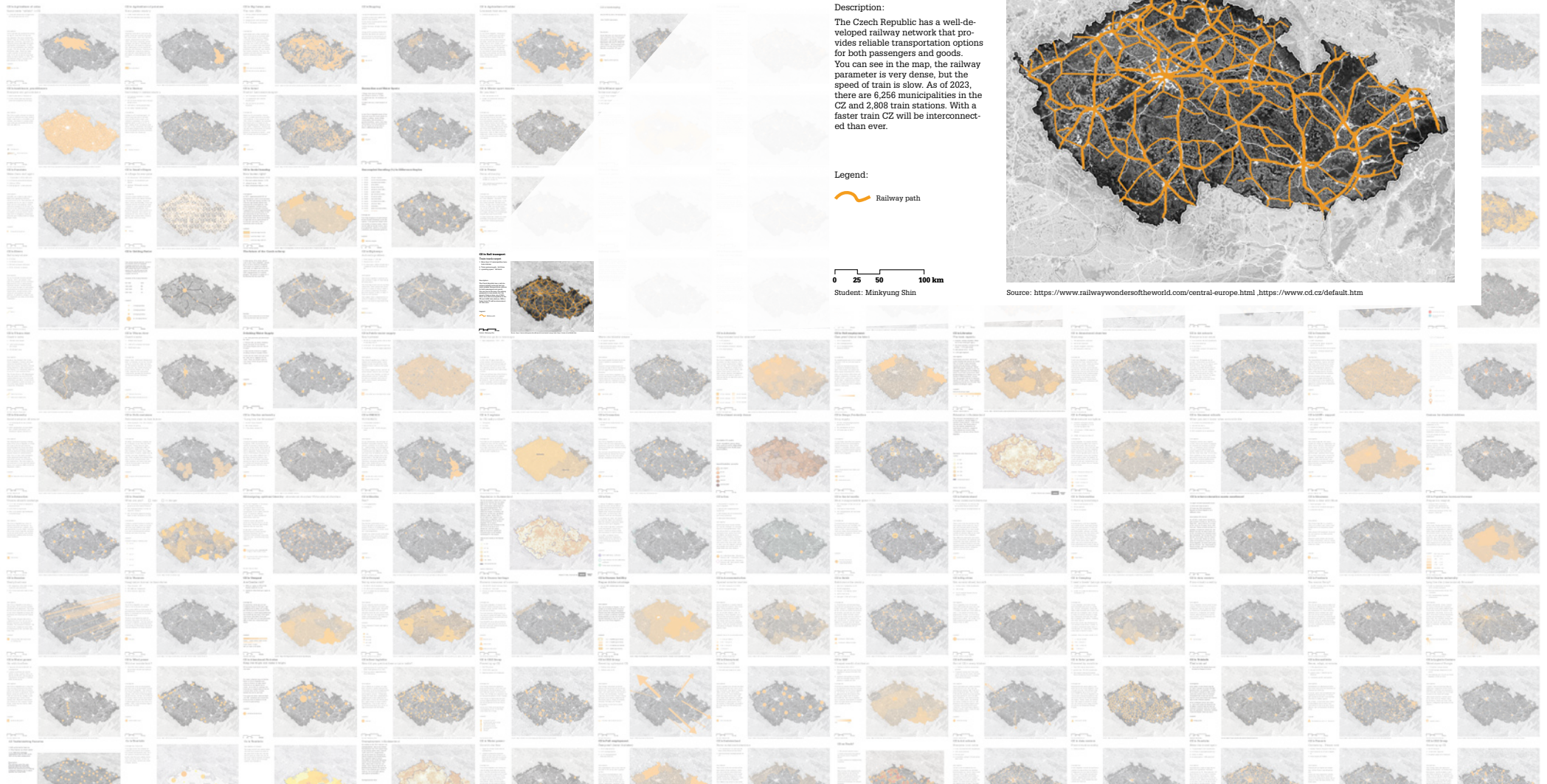
 Railway path

0 25 50 100 km

Student: Minkyung Shin



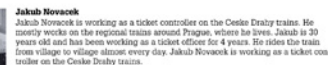
Source: <https://www.railwaywondersoftheworld.com/central-europe.html> , <https://www.cd.cz/default.htm>





# Interviews

Mobility  
**Trains are not just for the big city!**



Well, that depends on what part of the stretch, of course. From Prague to Kladno the trains are usually full during rush hour, and a great number of people use it throughout the day too. After Kladno I would say only a quarter of the people remain, maybe 20-30 on the train. But in the weekend it is different of course, people travel to the countryside to walk in the forest or to visit their grandparents.

There is nothing to do here. A family or tourists don't have time to go to the countryside unless it's the weekend. The only people using the train are people traveling to work, then it's kids and old people that don't have a car. Even when the car.

People need to get to places fast, and the fastest is to use a car, and when you already have a car you don't spend money on the train. I think the cars and the trains are competing for him.

**regarding the trains that you would change?**

I think the train infrastructure is fine. There are many to that go everywhere and they are comfortable. I think the problem is not the train itself, but the things surrounding

I think the bus stations are OK. I know a lot of them are small and a bit old, but I think people just use them to wait for the train and that's it. Maybe in the winter it's because people are cold and don't want to wait outside.

Yes, for sure. Everything that is new and good makes people want to go there more. When you see a small train station in the middle of nowhere it doesn't make you want to go there.

I think you have a good point about the train stations. It would definitely be good, you know the trains in Czechia used to be this great thing, but now it feels like they forgot about it. I think they just need to improve it all around and

advertisement is correct, would people want to use the brand again?

**PETR FEJK**  
Petr Fejk is a remarkable individual who previously served as the Ombudsman of České dráhy (Czech Railways). Throughout his tenure, he demonstrated a strong commitment to ensuring the rights and well-being of passengers and employees within the organization.

I don't believe in extremes, I prefer a balanced system. We must be connected with Europe, it is foolish to isolate ourselves. This country is slow, for instance, the approval of Prague's metro line D took 50 years. The highway network is overloaded, tenders for construction projects drag on, the railway network is not completed. The future should be in the fastest tracks and completion of the reconstruction of the existing railway network. We are building by meters, and that's a problem. We are not as bad as in Italy, but it can still be better. I see the future in the completion of high-speed railway lines.

**What are the most common complaints and problems you encounter as an ombudsman of Czech train companies? How do these challenges influence future strategies and plans of train companies?**

When I joined, we faced problems with the quality and age of trains and stations, as well as the behavior of staff. Czech Railways did not take people's complaints seriously and lacked empathy. This led to them having to compensate for delays and other issues. Services have improved since then, but the most important thing is empathy.

**How do you see the future role of rail transport in the context of sustainable mobility in the Czech Republic?**

People will not switch to railways, we are too slow for that. Electromobility must be cheaper, it needs to be more affordable.

**What innovations or technological changes do you expect in the railway sector in the coming years, and how could they affect train travel in the Czech Republic?**

When the speed issue is resolved, it is clear that people will prioritize it. The train is a luxury, it's like a taxi. You don't have obstacles. We need to speed up and simplify transport and invest in development, we need to make ecology cheaper.

**What are your visions of what ideal rail transport should look like in the future Czech Republic from a customer's perspective? What changes should occur in the area of services, safety, and accessibility?**

The D1 highway probably will not replace train transport. I believe it won't. The most important thing is the price, support is essential. There are warehouses around the D1 highway that would need to be relocated.

if Czech people responsible?

lectur  
vid

### g of Unoccupied ity Box

need to know before  
w to skill!

tion with a psychotherapist

# CZ1

## Comparisons

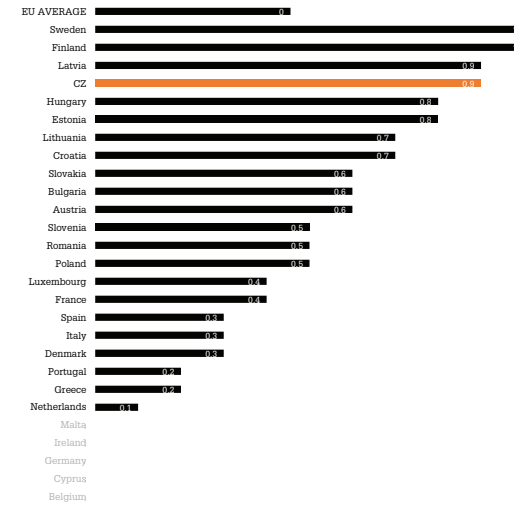
The last step involved comparing CZ to the other 26 members of the EU, enabling us to contextualize its position and characteristics. All the data was transferred to per capita values to refer to countries' scale and population.

### Railways

#### Description:

Cz is well known for its public services in transportation. This reflects in the network of train railways across the country. Total lenght 9,523 km of railways in CZ. 0.9 km per 1,000 people is pretty good number compared to the country size like Spain. But there is a big problem, because huge majority of it, runs through vilages, making the whole train network of CZ, very slow.

Units: Km of railtrack lenght per 1,000 capita.



Student: Jakub Longauer

Source: [https://ec.europa.eu/eurostat/databrowser/view/RAIL\\_IF\\_LINE\\_NA\\_custom\\_5249820/default/table?lang=en&table=entire-libraries](https://ec.europa.eu/eurostat/databrowser/view/RAIL_IF_LINE_NA_custom_5249820/default/table?lang=en&table=entire-libraries)



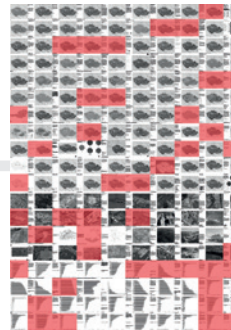
# How good is CZ1?

Out of all the data gathered, conclusions had been made on how good is CZ1 in different topics in comparison to other members of the European Union. The topics were organized into 6 agendas – Society, Built environment, Economy, Ecology, Governance, and Culture, ranging from CO<sub>2</sub> emissions of coal factories, over history defined socio-economic

disproportions in regions like Sudeten land, all the way to an increasing amount of high-tech companies in the country.

These issues and potentials were eventually turned into goals, aspirations, where we asked what the Czech Republic can become.

## Society



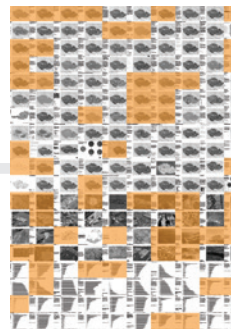
Collected data categorized



**CZ is n. 21 in the EU**  
in the percentage of foreigners living in the country

**Can CZ1 be welcoming?**

## Built environment



Collected data categorized



**CZ is n. 8 in the EU**  
in density

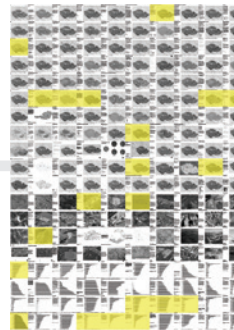
**Can CZ1 be dense?**

## Agenda

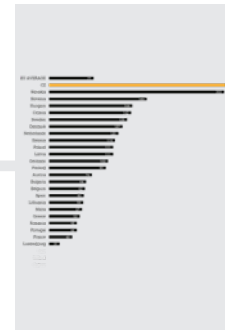
# How good is CZ1?

## Economy

Agenda



Collected data  
categorized

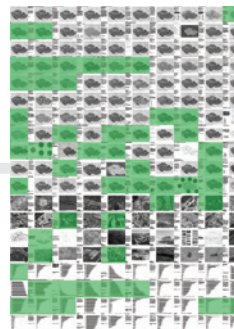


**CZ is n. 1 in the EU**  
in the amount of  
High-tech companies per  
capita

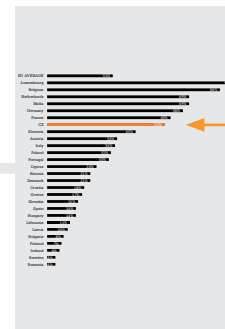
**Can CZ1 be  
EU's Silicon  
Valley?**

## Ecology

Agenda



Collected data  
categorized

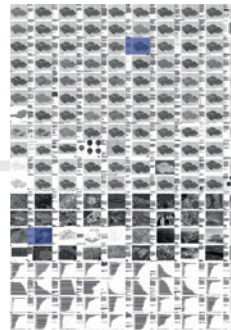


**CZ is n. 7 in the EU**  
in the percentage of  
disconnected natural  
landscape

**Can CZ1 be  
bio-connected?**

# How good is CZ1?

**Governance**



**Agenda**

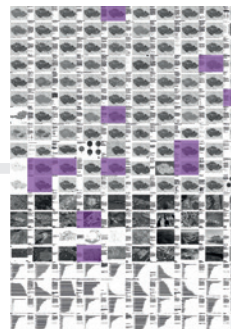
**Collected data categorized**



**CZ is n. 12 in the EU**  
in the democracy index

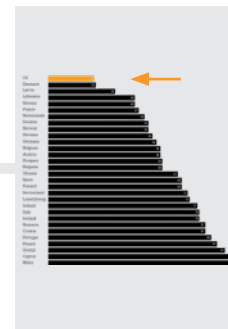
**Can CZ1 be fully democratic?**

**Culture**



**Agenda**

**Collected data categorized**



**CZ is n. 1 in the EU**  
in the smallest  
percentage of religious  
people

**Can CZ1 be religion free?**



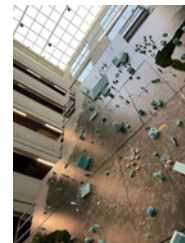
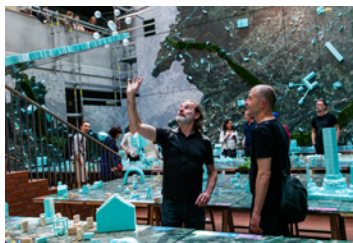
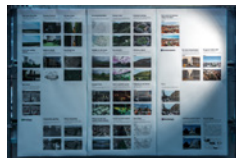
CZ2





# CZ2

The exhibition CZ2: Visions for the future of the Czech Republic represents the culmination of an extraordinary semester-long collaborative project, bringing together over 150 international students from the Faculties of Architecture at CTU, TU Delft, TU Liberec, VUT Brno, and ARCHIP. These students embarked on a profound exploration of the Czech Republic's future, resulting in an extensive array of ideas and projects that aim to address key issues and potentials of the Czech society.



The CZ2 Exhibition is not just an artistic showcase; it is a testament to the interdisciplinary collaboration – in this case of the participating students and academic institutions. It is also a form of manifest, invitation, a call for a discussion platform that would allow a professional and general public to seek and form the country's vision, the country's direction.

The exhibition stands as a beacon of this endeavor, an inspiration, igniting and fostering conversations toward a prosperous while sustainable Czech Republic.



At the heart of the exhibition lies a captivating model, occupying the atrium of the Faculty of Architecture at CTU. This installation serves as a visual narrative of proposed visions, complemented by a large collection of data including observations, maps, rankings among EU countries, interviews with experts, and a documentary capturing the entire creative process. Together, they offer visitors a multi-faceted experience, allowing them to engage deeply with the possibilities and visions for the future development of the country.



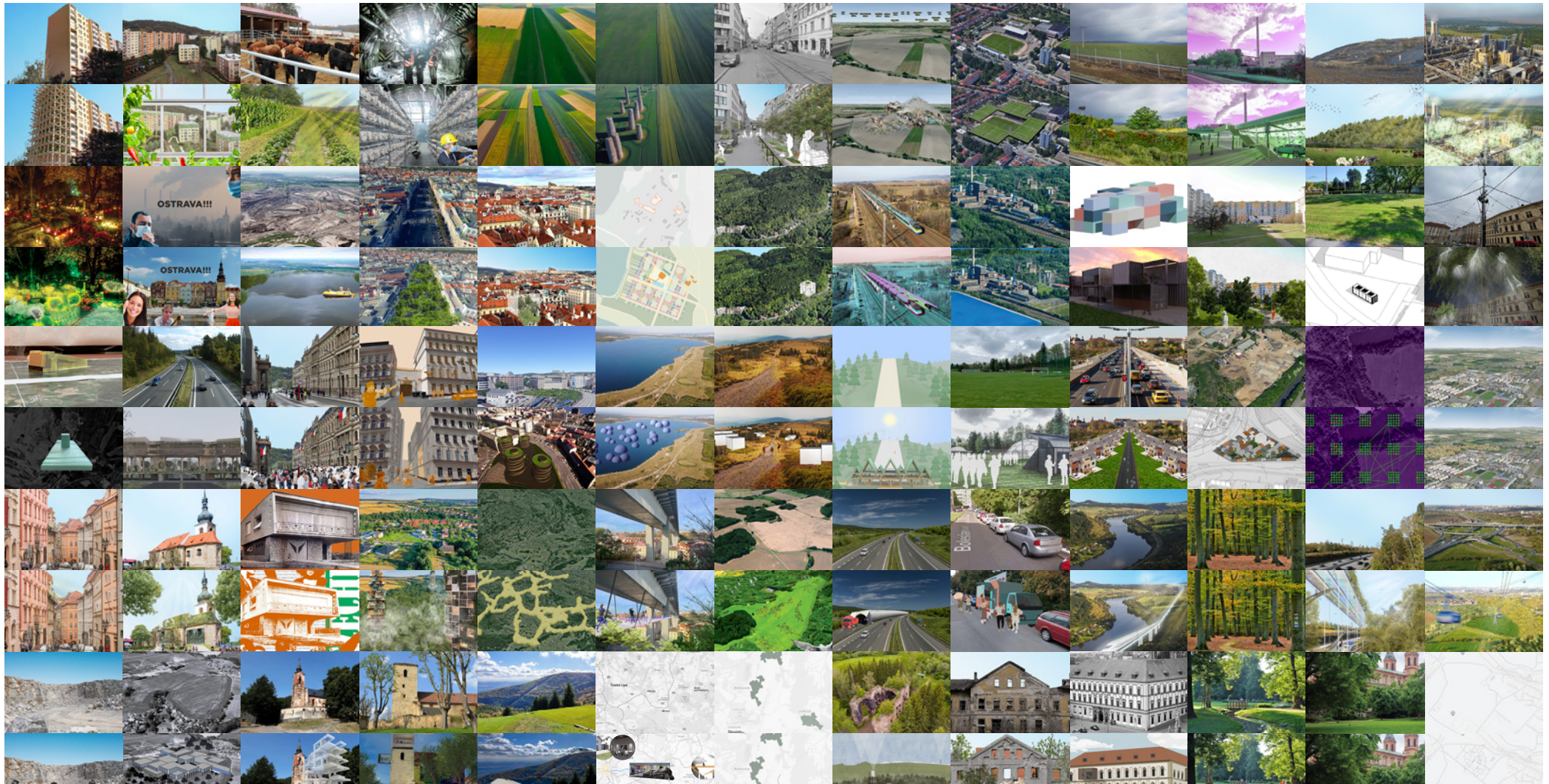


# CZ2

## Visions

Issues and potentials coming out of the data research served as a catalyzator for proposals of impactful visions.

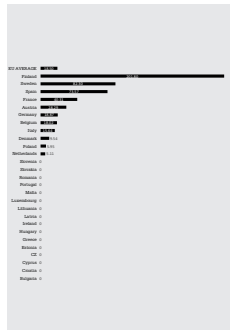
The design process was conducted using the “Before and After” approach. This method allowed us to provide the clearest possible understanding of a specific idea, showing both the existing condition and the vision for future development.





# Speed the Czech up

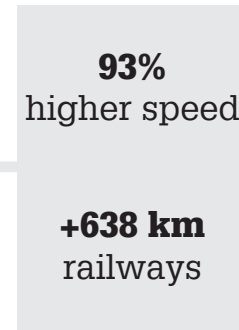
Travelling in the Czech Republic right now is quite slow. The idea proposes implementation of high-speed trains into CZ. With the usage of high-speed trains, the time and distance would shrink enabling to connect regions around the country and other European areas.



**Comparison**  
of the length of high-speed railway



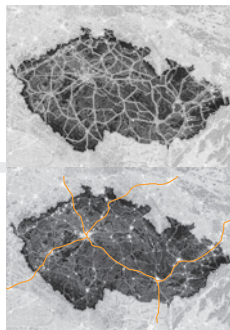
**Learning from the best**  
in EU



**Goal**



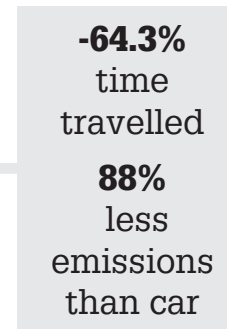
**Before and after image**



**Before and after map**  
of high-speed railway



**Model**



**Impact**

**...to travel**  
**effectively**



# Speed the Czech up



**Before**



**After**



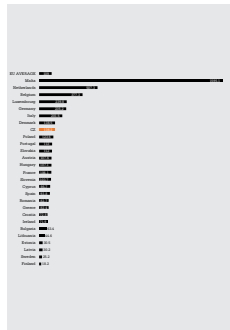
# Speed the Czech up



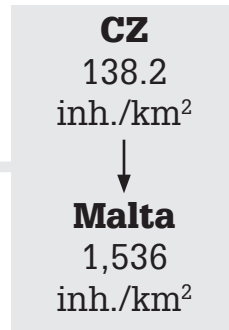


# Extra layer

Adding an additional layer to the rooftops of the Czech Republic would create a natural and seamless transition, increasing density and providing new housing options while reducing urban sprawl.



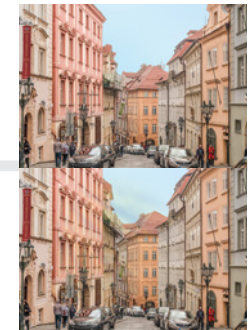
**Comparison**  
of population density



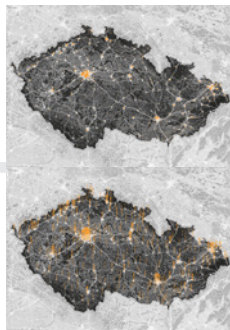
**Learning from the best**  
in EU



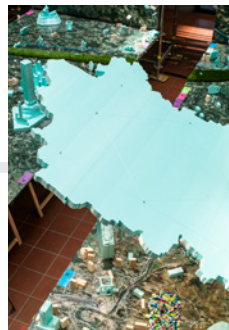
**Goal**



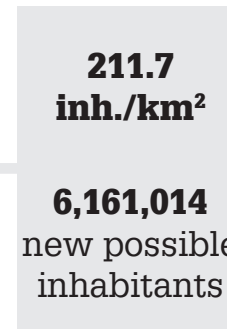
**Before and after image**



**Before and after map**  
of urban areas



**Model**



**Impact**

**...to increase density**



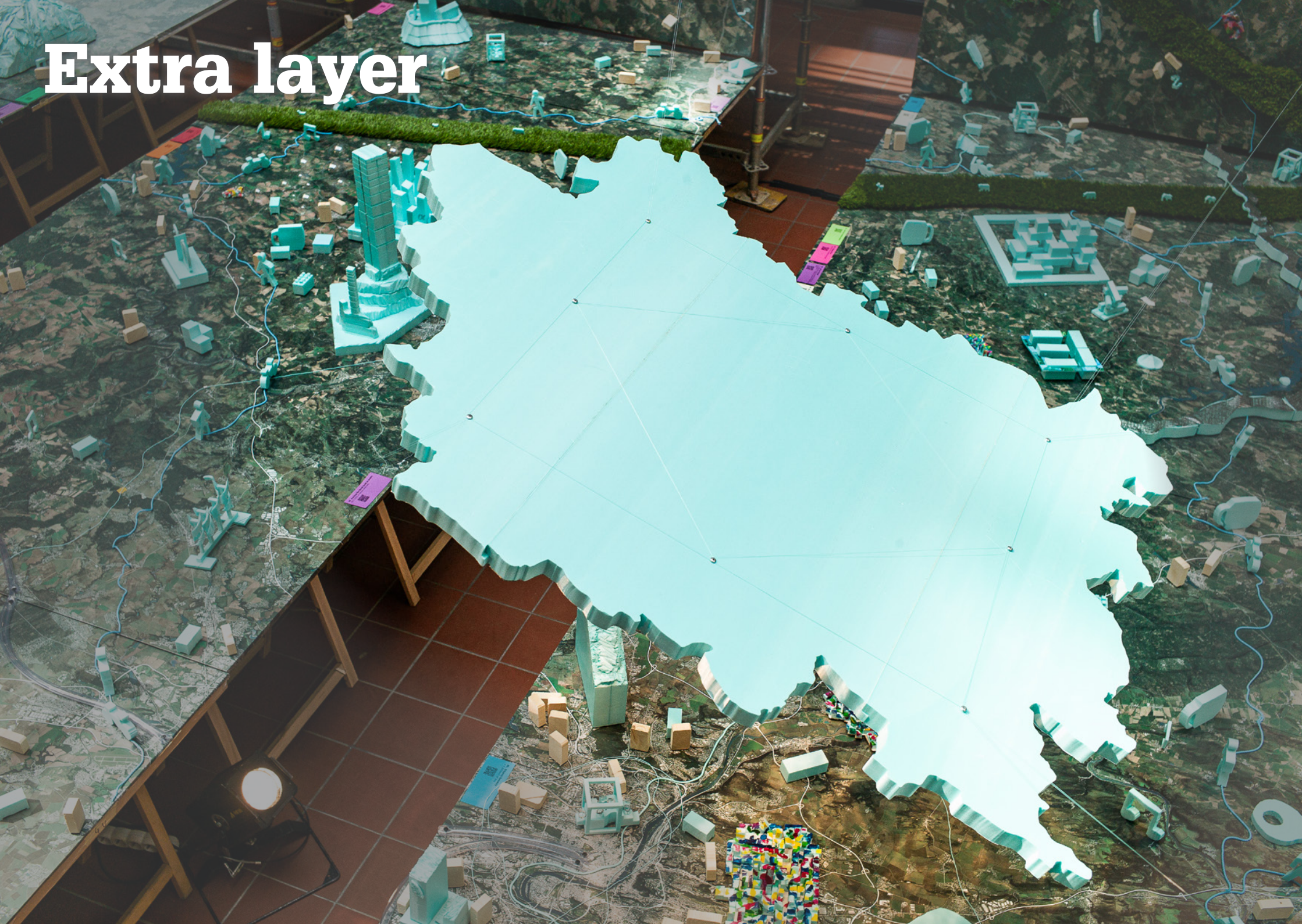
# Extra layer



## Before

## After



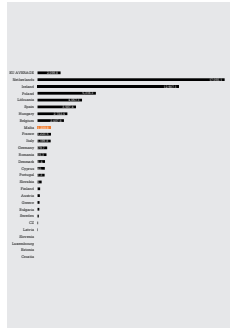


**Extra layer**



# Fungi-fy the mines

Black coal mines largely present in the Czech context consist of deep shafts and tunnels. These spaces have varying temperatures, which is ideal for facilitating the growth of diverse mushrooms. Many species stimulate brain neurons and are therefore beneficial for health. The whole process of mine harvest thus presents a novel form of agriculture usable for medical purposes.



**Comparison**  
of mushroom  
production

**CZ**  
51.4  
t/mil. capita  
↓  
**Netherlands**  
17,055  
t/mil. capita

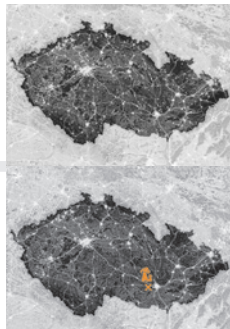
**Learning from the best  
in EU**

**1**  
coal mine  
transformed  
  
**22 km<sup>2</sup>**  
usable area

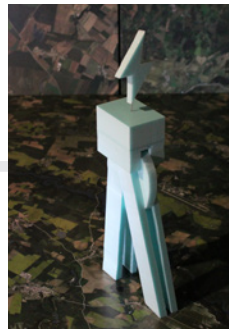
**Goal**



**Before and after image**



**Before and after map**  
of mines used for  
mushroom production



**Model**

**+62,857.2**  
**t/mil. capita**  
of  
mushrooms  
produced

**Impact**

**...to increase  
mushroom  
production**



# Fungi-fy the mines



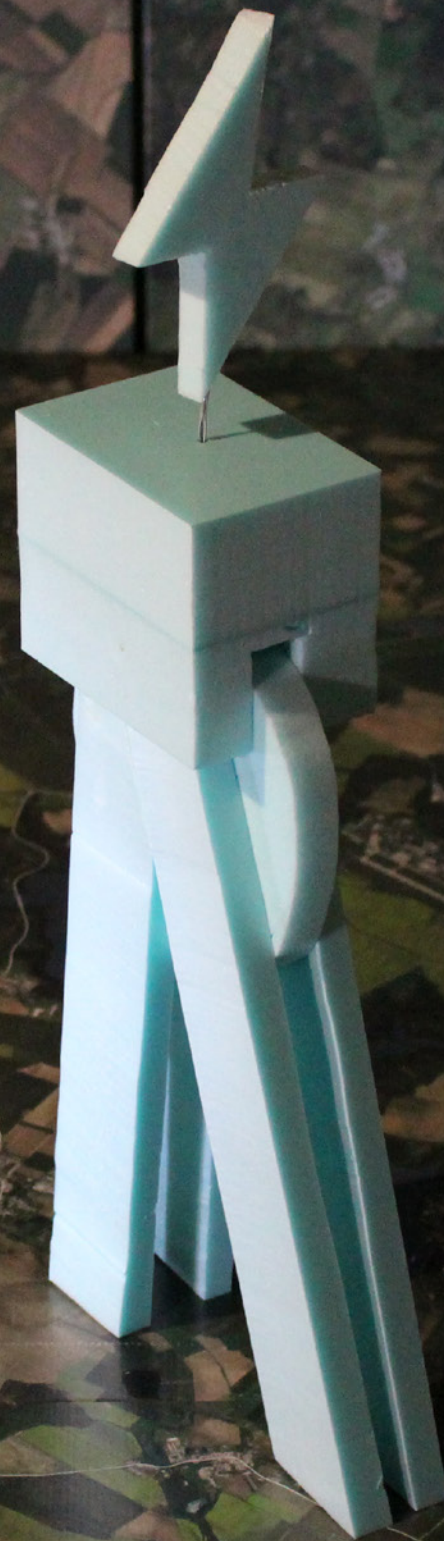
**Before**



**After**



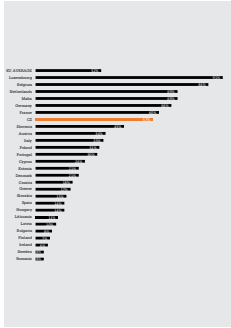
# Fungi-fy the mines



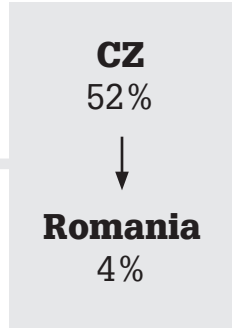


# Wildlife on the move

To enable safe migration of animals through CZ, the highly fragmented natural habitats are connected with natural migration corridors.



**Comparison**  
of the percentage of  
disconnected natural  
landscape



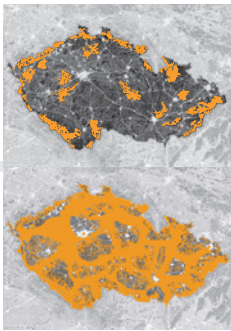
## Learning from the best in EU



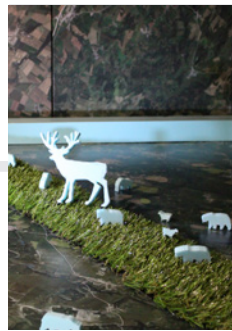
## Goal



### Before and after image



### Before and after map of migration corridors



## Model



## Impact

**...to connect habitats**



# Wildlife on the move

**Before**



**After**



# Wildlife on the move





# Farm the rooftops

Rooftops of “panelaks” (prefabricated apartment building structures) are used to grow fruits and vegetables in greenhouses to increase the accessibility of local food, and therefore decrease the need of transportation.



**Comparison**  
of the role of trade in the  
CO<sub>2</sub> footprint of a diet



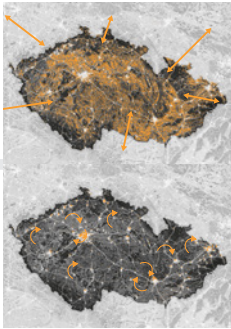
**Learning from the best**  
in EU



**Goal**



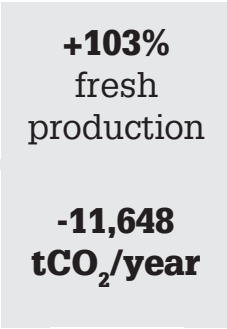
**Before and after image**



**Before and after map**  
of agriculture production



**Model**



**Impact**

**...to decrease  
food transport**



# Farm the rooftops



**Before**



**After**



# Farm the rooftops



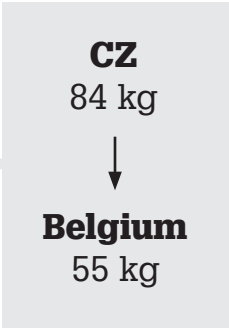


# Go vegan

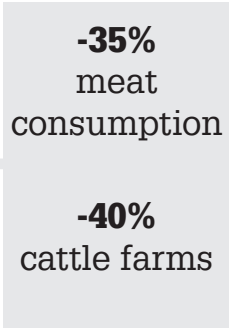
Meat production accounts for high amounts of greenhouse gasses. Turning the population vegan, would lead to spatial, ecological, and health improvements. It would enable to turn fields used for livestock production to farm vegetables and decrease CO<sub>2</sub> production.



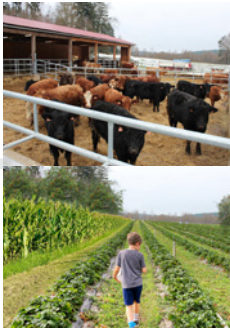
**Comparison**  
of kilograms of meat  
consumed per capita per  
year



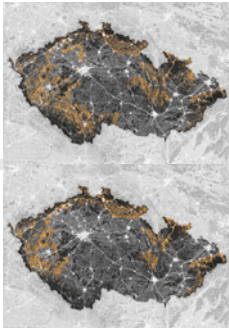
**Learning from the best**  
in EU



**Goal**



**Before and after image**



**Before and after map**  
of land for livestock  
production



**Model**



**Impact**

...to decrease  
CO<sub>2</sub> emissions



**Go vegan**



**Before**



**After**



**Go vegan**





**CZ2 Next**

**– Future of the  
project**

**Exhibition  
variants**

**Tour**

**Platform**



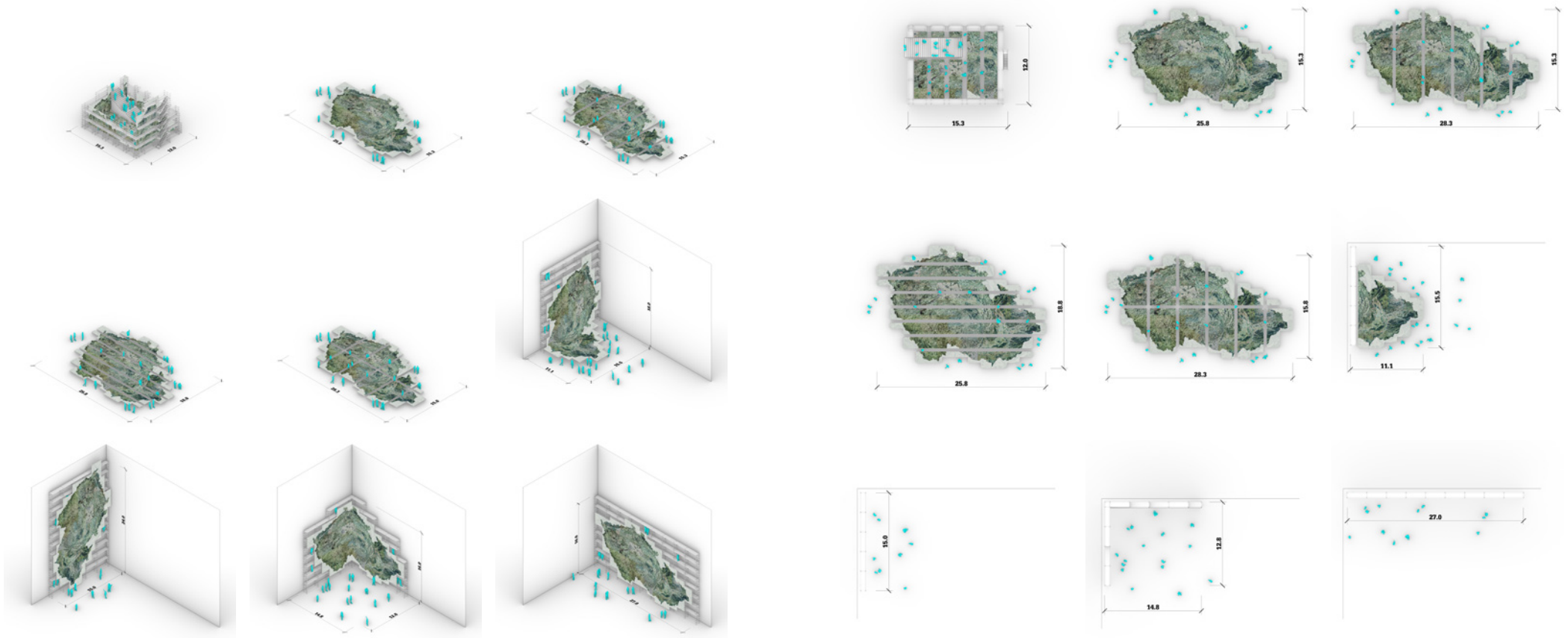
# CZ2

## Exhibition variants

The experience of the map and therefore of the country is greatly dependent on its arrangement. When spread horizontally, visitors can comfortably walk between regions evaluating ideas directly at their location. When put vertically, the spectator has an overview of the entire country allowing to find relations in the macro scale.

At the atrium of the Faculty of Architecture at CTU, we tested multiple folds and divisions to test the full potential.

**However, thanks to the modular system, the amount of variants is almost endless. It is all about the space's properties and what kind of topics are desired to be highlighted with the exhibition.**



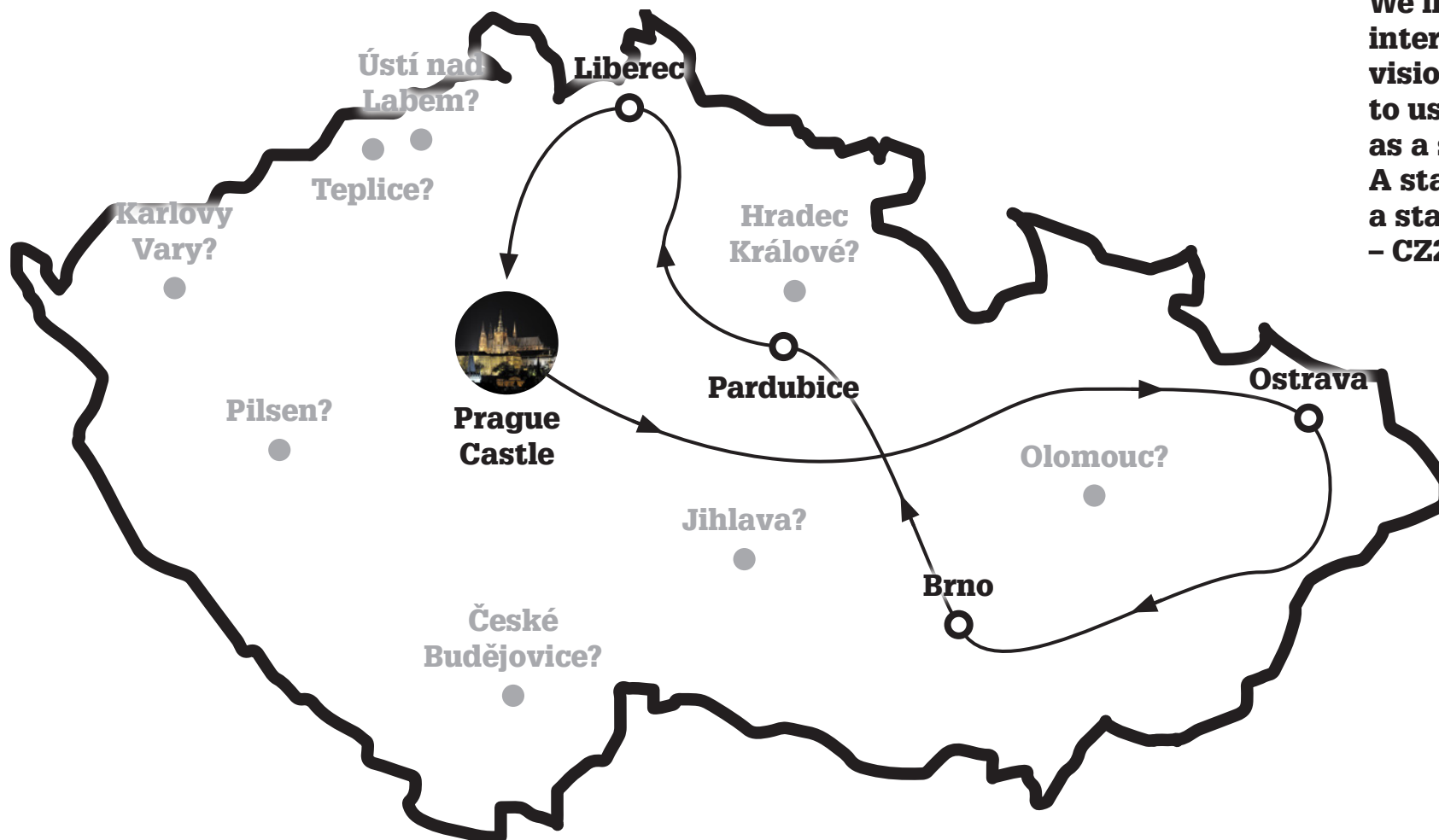


# CZ2 Tour

CZ2 Exhibition's purpose from the beginning was to propose, inspire, share, and ignite a discussion. At the same time, we always wanted to reach out further than to the architectural community, further than to the realm of academia. In the end, this is a project about the country, for the country, so the entire country should have a chance to see it.

Therefore, we plan a tour. Tour around major cities, but also distant areas with virtually unlimited path options.

**We invite everyone interested in discussing visions about the country to use our exhibition as a starting point. A starting point to form a stable platform – CZ2 Platform.**





# CZ2 Platform

At the end of our project, as an ultimate vision, stands a stable platform. One that allows evaluating existing situations and proposing solutions. One that presents these proposals in a tangible, clear manner so that the whole nation can understand and contribute.

Currently, national agendas and visions are defined, presented, and executed mostly by political establishments. The communication lacks the transparency of methodology, and visions' objective values are clouded by affiliation to a concrete political party.

Longer planning is therefore undermined. Think tanks on the other hand may provide objective proposals, but they lack visibility for the general public.

Could there be a platform that can stay objective while efficiently leading a discussion between professionals, political executorial power, and Czechs as an entire nation?

Whether the final form would be an online channel, a network of cultural centers in Czech cities, or a recurring public event is open for exploration.

**This CZ2 Platform, however, should be democratic, transparent, impartial, and accessible to all.**





# Credits

## Contact:

Winy Maas  
winymaas@mvrdiv.com  
+31 654755911

Šimon Knettig  
simon@thewhyfactory.com  
+420 734 686 007

## BK TU Delft The Why Factory (T?F)

Winy Maas  
Javier Arpa Fernández  
Adrien Ravon  
Anna Sujkowska

Adrián González Rojas  
Carmen Urbón  
Clara Morales Roldán  
Emilio Prado Rodríguez  
Fruzsina Csekei  
Grisha Kirby  
Jemma Scheijde  
Jiajie Yuan  
Joep Wuijnen  
Lewis Vitsentzatos  
Matteo Cappello  
Maximilian Mika  
Otto Hallstrup  
Sumeet Joshi  
Tim Roersma  
Vittorio Domanda  
Vrinda Kapoor

## FA CTU Prague

Winy Maas  
Šimon Knettig

Dominik Nosko  
Jakub Longauer  
Johana Simkovičová

## Photo Credits:

Štěpán Hon  
Vladimír Ihnatko  
David Mecka  
CZ2 Team  
Creative Commons

Lucie Bielaková  
Mikuláš Ott  
Min Kyung Shin  
Nazca Bize  
Pin-Hsi Sung  
Raquel Pérez Rubio  
Tsortanidis Achilleas  
Victoria Tomás Fiteni

## FAA TUL Liberec

Radek Kolařík

Barbora Schiffmannová  
Karolína Černá  
Magdaléna Hubáčková  
Ráchel Podhorská  
Tomáš Burian  
Vladimír Vacík

## FA VUT Brno

Michal Palašćák  
Szymon Rozwalka

Adéla Kráčmarová  
Amna Kahrić  
Aneta Báčová  
Anežka Švančarová  
Anna Divilová  
Daniel Palma  
Hilal Koça  
Honza Šranko  
Iliass Chamane  
Jacek Czudak

Markéta Kampánová  
Martin Kavan  
Martin Vostal  
Michal Micka  
Omer Bijelic  
Samuel Ciernik  
Šárka Schmiedová  
Simon Provázek  
Tereza Moravcová  
Utku Kan

## ARCHIP

Elan Fessler  
Jakub Kopecký  
Jan Schindler  
Jaroslav Wertig  
Klára Doleželová  
Lukáš Kurilla  
Ondřej Janků  
Regina Loukotová  
Shota Tsikoliya  
Simon Prokop  
Yvette Vašourková

Adam Abdulhameed  
Albert Furu  
Alena Orosová  
Alžbeta Pleyerová  
Ana Maria Faur  
Anders Haagenrud  
Anna Fikrlová  
Anna Schickerová  
Antoniya Yaneva  
Aren Sarkisian  
Arpi Hovhannisyan  
Art Limani  
Barbora Daničková  
Barbora Lejsková  
Benjamin Bergem  
Daniya Khamitova  
Elifsu Yumurtaci  
Ema Vozafová  
Era Merovci  
Hazel Nye  
Hui Huang  
Christiana Afxentiou  
Iakob Jijavadze  
Íma Fönn Hlynisdóttir  
Irakli Namoradze  
Isabella Shaw

Jakub Blažek  
Jakub Svoboda  
Jan Gleb Badul  
Ján Cholvadt  
Jeanne Kielwasser  
Jiří Milata  
Julijana Topalli  
Kateryna Buha  
Kristiina Leppänen  
Kristine Mshvidobadze  
Linda Himmatová  
Mara Rugescu  
Margarita Slukina  
Margherita Ometto  
Maria Dimitrova  
Maria Frias  
Maria Hubich  
Martha Fabiana Robaldo  
Martin Bardon  
Matteo Havran  
Michael Pope  
Mingtao Huang  
Mylana Sydorenko  
Nariman Mammadov  
Neilla Isaro Mugarura  
Nino Kurdevanidze  
Nino Margania  
Pavel Jaroščák  
Philipp Charfreitag  
Raphael Saad  
Richard Gibout  
Robert Cvirik  
Sae Mahalley  
Sai Shruthi Jayanthi  
Sai Yiu Yu  
Sára Gebauerová  
Sean Kangataran  
Shahnara Pashayeva  
Sonika Panda  
Tamara Grabovska  
Tána Eisenbergerová  
Timurs Grigorjans  
Toni Roka  
Václav Vávra  
Vakhtang Makhatadze  
Valeria Andrade  
Vít Mádle  
Vladyslav Palchuk  
Yanis Hommet  
Zeynep Buse Mutluer  
Zoe Harrow



# CZ2

**Visions for the  
future of the  
Czech Republic**



**Contact:**

**Winy Maas**  
winymaas@mvr.dv.com  
+31 654755911

**Šimon Knettig**  
simon@thewhyfactory.com  
+420 734 686 007

**Credits**

**t?f**  
The Why Factory

**ARCHIP**



**FACULTY  
OF ARCHITECTURE  
CTU IN PRAGUE**



**F A A T U L**

**Supported by**



Kingdom of the Netherlands

**General partner**

**SOLODOOR**  
dveře a zárubně

**Partners**

**DEK PLAYBAG**